

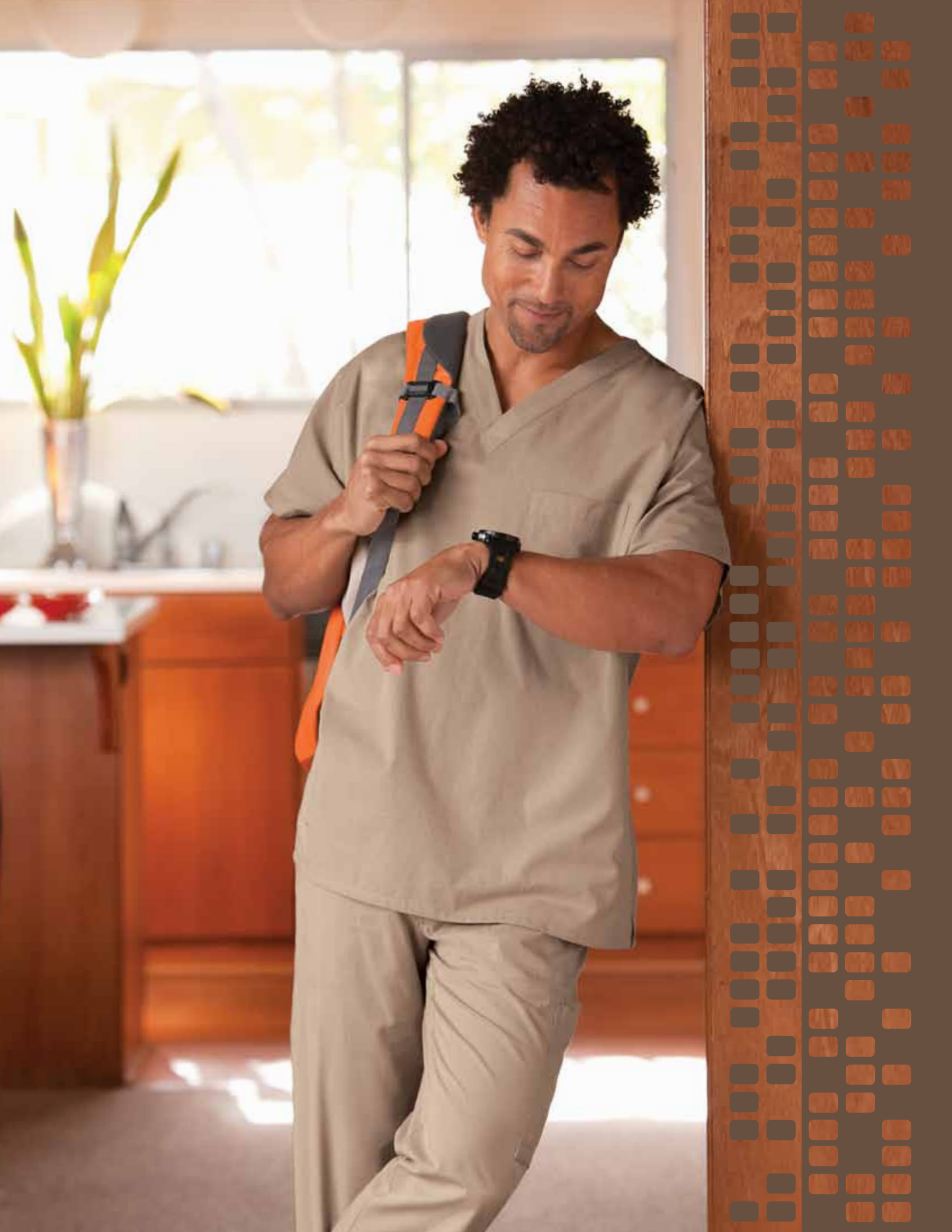


Barco  
uniforms



FALL 2011

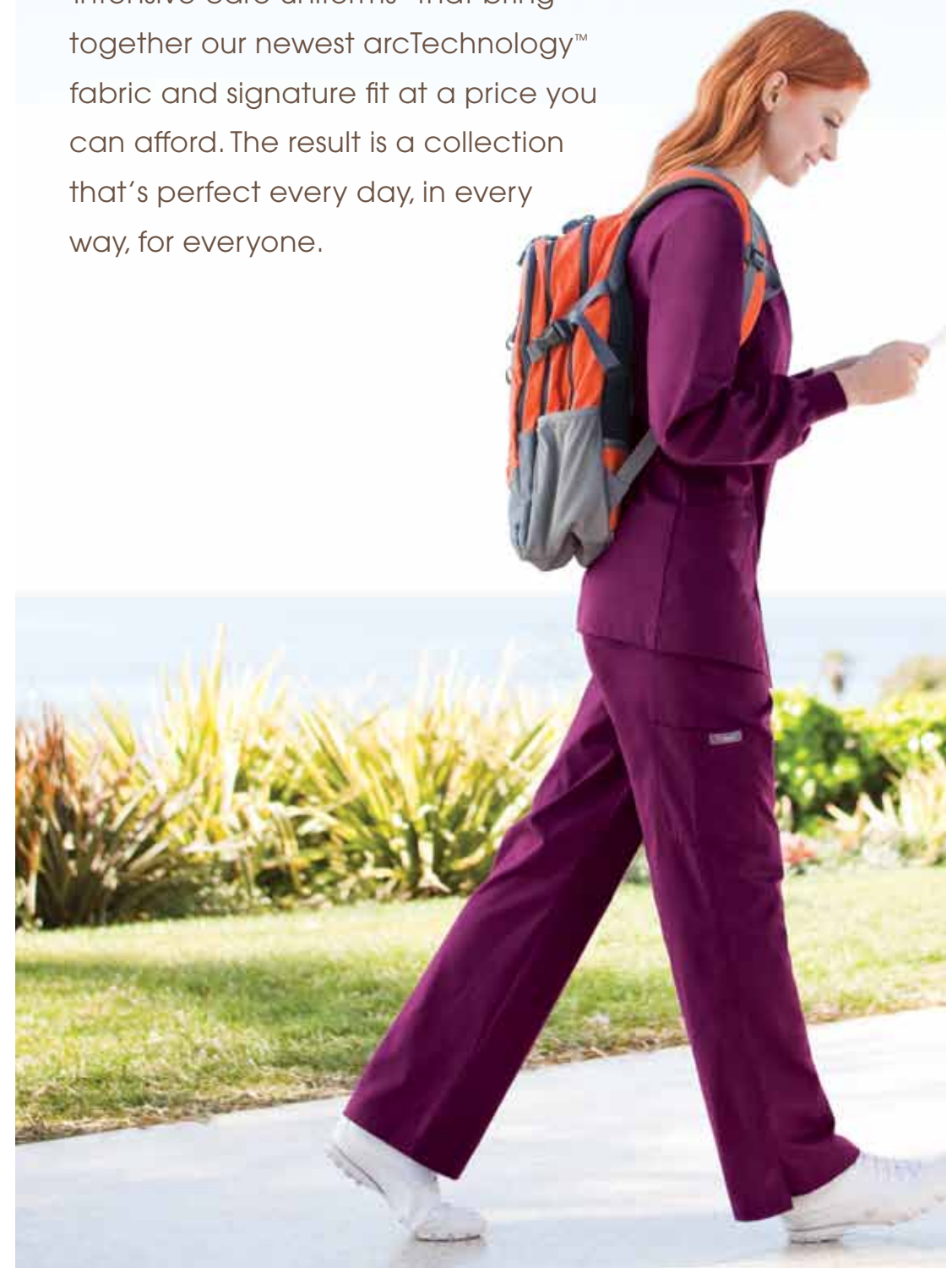
Love what you wear™



# EVERYDAY

## IS ABOUT TO GET BETTER

These are day-to-day scrubs elevated to be anything but routine. They're "intensive care uniforms" that bring together our newest arcTechnology™ fabric and signature fit at a price you can afford. The result is a collection that's perfect every day, in every way, for everyone.



## VALUE WITHOUT COMPROMISE

A great product at a great price, ICU by Barco™ is an exceptional collection for groups and the individuals in them. It's practical and affordable with the Barco style and performance fabrics you love, and in the always-available core colors you need. Now you'll never have to give up anything in your professional wear again.

10 WHITE

01 BLACK

08 NEW ROYAL

23 INDIGO

37 HUNTER

40 CIEL

65 WINE

39 TEAL • NEW

84 GRAPE • NEW

18 PEWTER • NEW

230 KHAKI • NEW



**arcrelease**™  
TECHNOLOGY

Looking great has never been so effortless. Experience for yourself our premium easy-care fabric with the soil-release finish that helps lift the most challenging stains.



7178  
0211



**NEW COLORS**

- 18 PEWTER
- 39 TEAL
- 84 GRAPE
- 230 KHAKI

**NEW STYLE • 7178**

arcRelease™ - 55% Cotton / 45% Poly  
Soft Micro Twill



7178 – 3 pocket unisex v-neck top,  
plain back Sizes: XS - 5XL



**JUNIOR**

55% Cotton / 45% Poly  
Soft Micro Twill

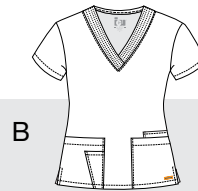


A. 41232 – 3 pocket mock placket,  
side panel top Sizes: XS - 5XL  
Shown with 4299  
See matrix for available colors.



**MISSY**

55% Cotton / 45% Poly  
Soft Micro Twill



B. 71150 – 4 pocket detail v-neck,  
Sizes: XS - 5XL  
Shown with 7251  
See matrix for available colors.



**UNISEX**

55% Cotton / 45% Poly  
Soft Micro Twill



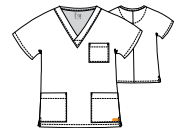
C. 7181 – 1 pocket unisex v-neck top,  
plain back Sizes: XS - 5XL  
Shown with 0211  
See matrix for available colors.



**41232**  
3 pocket mock placket, side panel top  
Fit: Junior  
Sizes: XS - 5XL



**71150**  
4 pocket detail v-neck  
Fit: Missy  
Sizes: XS - 5XL



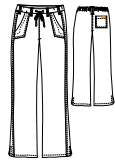
**7178 • NEW**  
3 pocket unisex v-neck top, plain back  
Fit: Unisex  
Sizes: XS - 5XL



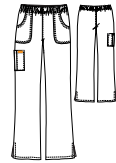
**7181**  
1 pocket unisex v-neck top, plain back  
Fit: Unisex  
Sizes: XS - 5XL



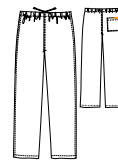
**6433**  
2 pocket princess line snap front jacket, knit cuffs  
Fit: Missy  
Sizes: XS - 5XL



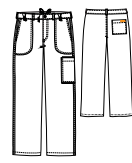
**4299**  
3 pocket tie front pant with elastic back waist  
Fit: Junior  
Sizes: XS - 5XL  
XSP - XLP, XST - XLT



**7251**  
3 pocket soft elastic logo waistband pant  
Fit: Missy  
Sizes: XS - 5XL  
XSP - XLP, XST - XLT



**7257**  
1 pocket unisex pant with drawstring tie  
Fit: Unisex  
Sizes: XS - 5XL



**0211**  
5 pocket zip front, draw waist pant  
Fit: Men  
Sizes: S - 5XL  
ST - XLT

**arcrelease™**  
TECHNOLOGY

55% Cotton / 45% polyester  
Soft Micro Twill

10	White				
01	Black				
08	New Royal				
23	Indigo				
37	Hunter				
40	Ciel				
65	Wine				
18	Pewter • NEW				
39	Teal • NEW				
84	Grape • NEW				
230	Khaki • NEW				



**29122**  
arcRelease™ - 65% Poly  
35% Cotton Twill



34" 7 pocket unisex Lab Coat, with side access, mock back belt  
Sizes: XS - 5XL

**6433**  
arcRelease™ - 55% Cotton  
45% Poly Soft Micro Twill



2 pocket princess line snap front jacket, knit cuffs  
Sizes: XS - 5XL

**arcTechnology™**

At Barco, we're driven to innovate. It's partly because that's just who we are – always reaching for more and always looking to advance the industry. But it's also because the people who wear our uniforms want comfort and need fabric functionality to match work environments that are becoming more and more demanding every day. The development of arcTechnology™ – Advanced Research Clothing™ Technology – is that next big idea that blends style, fit, feel and performance into a new and higher standard that is distinctly Barco's and uniquely suited to our customers.

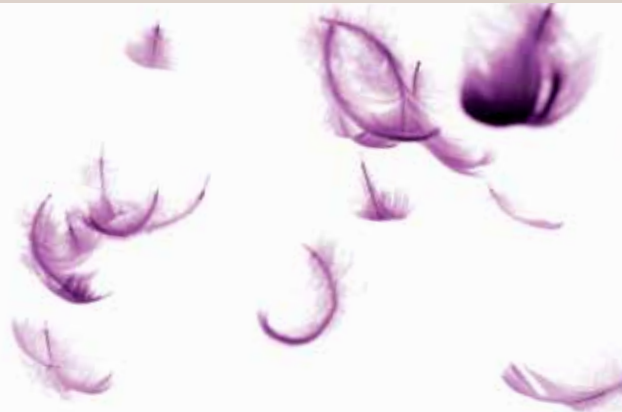
**arcrelease™**  
TECHNOLOGY



Looking great has never been so effortless. Experience for yourself our premium easy-care fabric with the soil-release finish that helps lift the most challenging stains.

AVAILABLE IN THE **ICU™ BY BARCO** COLLECTION

**arclux™**  
TECHNOLOGY



With arcLux™, it's all about touchability. This super-soft fabric pampers you ... even as you spend your day caring for others.


AVAILABLE IN THE **GREY'S ANATOMY™ PROFESSIONAL WEAR BY BARCO** COLLECTION

**arcflex™**  
TECHNOLOGY



With arcFlex™, it's all about freedom and fit. This exclusive fabric stretches and moves with you, leaving you looking and feeling your best through even the longest shift.

AVAILABLE IN THE **NRG™ BY BARCO** COLLECTION



**arclux™**  
TECHNOLOGY

It's all about touchability. This super-soft fabric pampers you ... even as you spend your day caring for others.



41285  
4232



41285



41285



41285

**NEW COLORS**

529 RASPBERRY

30 OLIVE

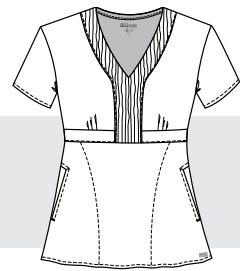
59 AMETHYST

230 KHAKE

39 TEAL

**NEW STYLES • 41285 - 4801 - 4440**

arcLux™ - 77% Polyester / 23% Rayon



41285 – 2 pocket combination  
 pleat v-neck with bias front skirt,  
 darted back  
 Sizes: XS - 3XL



A



A



B

**4801 • NEW VERSATILE DRESS - Great as a dress or light jacket**

arcLux™ - 77% Polyester / 23% Rayon



A

A. 4801 – 40" zip front 3 pocket dress  
 with back french seam yoke Sizes: XS - 3XL

**4440 • NEW**

60% Cotton / 40% Polyester  
 Peached Twill



B

B. 4440 – 33" collarless tagless lab  
 with 3 welt pockets and shoulder pads  
 for shape Sizes: XS - 3XL



**41285 • NEW**  
2 pocket combination pleat v-neck with bias front skirt, plain back  
Fit: Junior  
Sizes: XS - 3XL



**41228**  
2 pocket mock placket buckle front, fitted back  
Fit: Junior  
Sizes: XS - 3XL



**71139**  
2 pocket v-neck, fitted back with stitch detail  
Fit: Missy  
Sizes: XS - 5XL



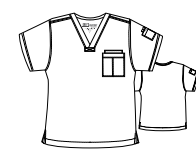
**41101**  
2 pocket mock wrap, princess seams, elastic back  
Fit: Junior  
Sizes: XS - 5XL



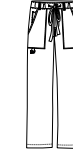
**4153**  
3 pocket mock wrap, tab back  
Fit: Junior  
Sizes: XS - 5XL



**4430**  
3 pocket round neck snap front warm-up, fitted back  
Fit: Junior  
Sizes: XS - 5XL



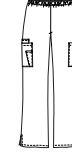
**0103**  
3 pocket v-neck, plain back with twill tape accents  
Fit: Men's  
Sizes: S - 5XL



**0203**  
6 pocket zip fly drawstring with twill tape accents  
Fit: Men's  
Sizes: S - 5XL, XST - XLT



**4232**  
5 pocket, tie front, elastic back pant  
Fit: Junior  
Sizes: XS - 5XL, XSP - XLP, XST - XLT



**7253**  
4 pocket pull on straight leg pant  
Fit: Missy  
Sizes: XS - 5XL, XSP - XLP



**4245**  
4 pocket cargo pant with logo elastic inside back  
Fit: Junior  
Sizes: XS - 3XL, XSP - XLP

**arclux™**  
TECHNOLOGY

77% Polyester / 23% Rayon

10	White										
01	Black										
08	New Royal										
23	Indigo										
40	Ciel										
222	Truffle										
328	Bahama										
336	Jade										
474	Twilight										
65	Wine										
905	Steel										
39	Teal	• NEW									
230	Khaki	• NEW									
30	Olive	• NEW									
59	Amethyst	• NEW									
529	Raspberry	• NEW									
339	Misty										
458	Turquoise				*						
549	Purple Rain				XS - 3XL						
732	Passion										
622	Pink Quartz										
346	Chartreuse										

**ATHENA • NEW COLORS**

Coordinates with Grey's Anatomy™ Solids  
arcLux™ - 77% Polyester / 23% Rayon



AHB - BLACK



ARR - NEW ROYAL



ATI - INDIGO



AOV - OLIVE



AAT - AMETHYST



ARS - RASPBERRY

**41299**

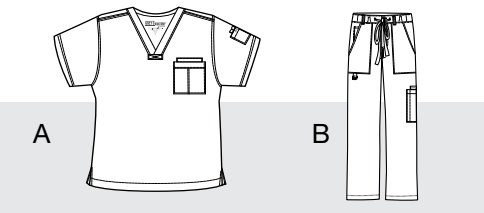
arcLux™ 77% Polyester / 23% Rayon

3 pocket mock wrap, tab back  
Sizes: XS - 5XL



**MEN • NEW COLORS**

arcLux™ - 77% Polyester / 23% Rayon



A. 0103 - 3 pocket v-neck, plain back with twill tape accents Sizes: S - 5XL  
B. 0203 - 6 pocket zip fly drawstring, with twill tape accents Sizes: S - 5XL, XST - XLT  
See matrix for available colors.

- 230 KHAKI • NEW
- 39 TEAL • NEW

\*NEW FOR FALL 2011



**0905**  
60% Cotton / 40% Polyester  
Peached Twill

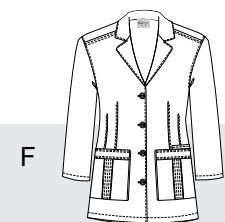
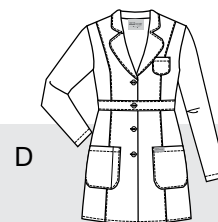
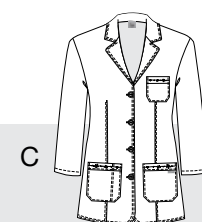
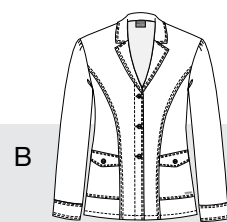
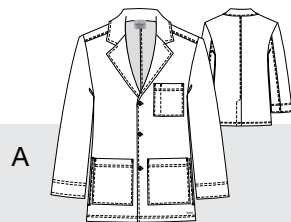
**4438**  
60% Cotton / 40% Polyester  
Peached Twill

**4425**  
60% Cotton / 40% Polyester  
Peached Twill

**4419**  
60% Cotton / 40% Polyester  
Peached Twill

**7446**  
60% Cotton / 40% Polyester  
Peached Twill

**7460**  
60% Cotton / 40% Polyester  
Peached Twill



34" 5 pocket men lab coat  
side access, center back vent  
Sizes: 32 - 48, 50 - 52

28" 2 pocket princess seam  
consultation coat, fitted back  
Sizes: XS - 3XL

32" 3 pocket button front, embroidered  
heartline detail, belt tab back  
Sizes: XS - 3XL

34" 3 pocket lab, waist  
detail Sizes: XS - 3XL

32" 2 pocket fitted lab,  
belt back detail Sizes: XS - 3XL

32" 3 pocket lab, pintuck detail  
with back tab Sizes: XS - 3XL

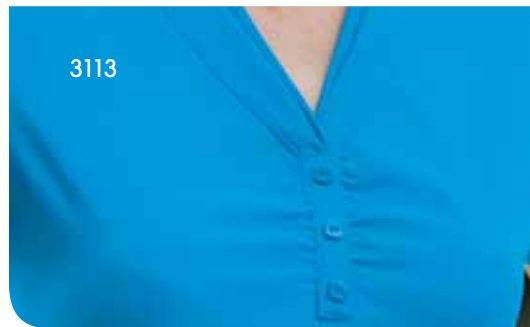


**arcflex™**  
TECHNOLOGY

It's all about freedom and fit.  
This exclusive fabric stretches and  
moves with you, leaving you looking  
and feeling your best through even  
the longest shift.



3113  
3211



3113



3211



3211

NEW COLORS

231 ESPRESSO

476 AZURE BLUE

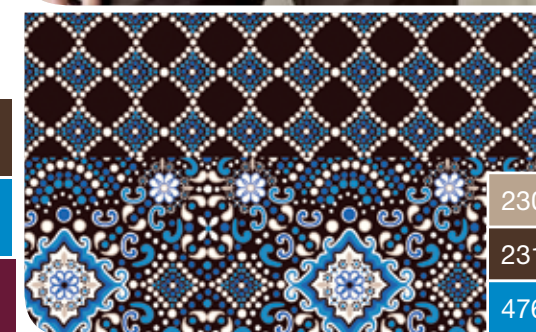
65 WINE



A



C



230

231

476



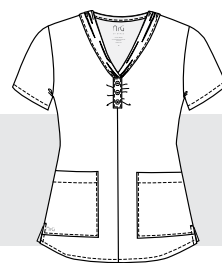
230

231

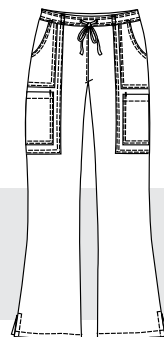
476

NEW STYLES • 3113 - 3211

arcFlex™ - 74% Poly / 22% Rayon / 4% Spandex



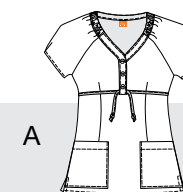
3113 – 2 pocket shirred collar novelty button placket, fitted back  
Sizes: XS - 3XL



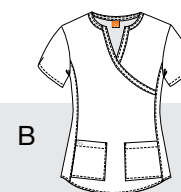
3211 – 4 pocket mid rise elastic back tie front flare pant  
Sizes: XS - 3XL, XSP - XLP

NAPLES • NEW

97% Cotton / 3% Spandex Poplin



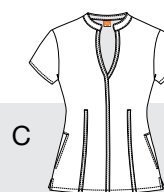
A



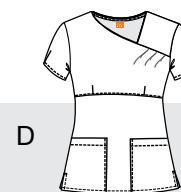
B

A. 3121-NPL – 2 pocket raglan with mock placket and loop through tie, fitted back Sizes: XS - XL

B. 41269-NPL – 2 pocket mock wrap panel side, fitted back Sizes: XS - 3XL



C



D

C. 3120-SIC – 2 pocket mandarin collar, fitted back Sizes: XS - 3XL

D. 3118-SIC – 2 pocket fashion mock wrap with tucks, fitted back Sizes: XS - XL

74% Poly / 22% Rayon / 4% Spandex



**3113 • NEW**

2 pocket Shirred collar novelty button placket, fitted back  
Fit: Junior  
Sizes: XS - 3XL



**3111**

2 pocket mock empire front tuck neck, fitted back  
Fit: Junior  
Sizes: XS - 3XL



**3119**

2 pocket mock wrap panel side, fitted back  
Fit: Junior  
Sizes: XS - 3XL



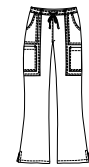
**3103**

2 pocket v-neck inset, fitted back  
Fit: Junior  
Sizes: XS - 5XL



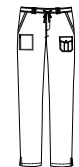
**3414**

3 pocket round neck button front warm-up, fitted back  
Fit: Junior  
Sizes: XS - 5XL



**3211 • NEW**

4 pocket mid rise elastic back tie front flare pant  
Fit: Junior  
Sizes: XS - 3XL  
XSP - XLP



**3208**

6 pocket tie front elastic back, low rise, tapered leg  
Fit: Junior  
Sizes: XS - XL  
XSP - XLP



**3207**

4 pocket tie front straight leg  
Fit: Junior  
Sizes: XS - 5XL  
XSP - XLP  
XST - XLT

10	White							
01	Black							
08	New Royal							
23	Indigo							
40	Ciel							
65	Wine	• NEW						
231	Espresso	• NEW						
340	Breeze							
476	Azure Blue	• NEW						
639	Shocking							
645	Plum							
684	Hot Tamale							



**3415 • NEW**

arcFlex™ - 64% Cotton / 34% Poly / 2% Spandex

30" 2 pocket waist seamed double collar with tab detail  
Sizes: XS - 3XL



**3409**

arcFlex™ - 64% Cotton / 34% Poly / 2% Spandex

33" 2 pocket button tab front, fitted back  
Sizes: XS - 3XL

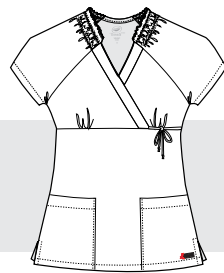




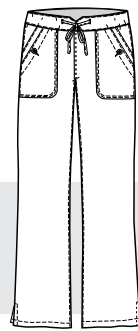
41227  
4247

**41227 - 4247**

60% Cotton / 40% Poly Peached Twill



41227 – 2 pocket raglan elastic ruffle neck, side tie, fitted back  
Sizes: XS - 3XL



4247 – 6 pocket low rise with notch tie front band, straight leg pant, elastic back  
Sizes: XS - 3XL



41227



41227



4247

**NEW COLORS**

474 TWILIGHT

652 RAZMATAZZ



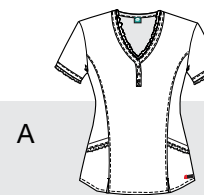
A



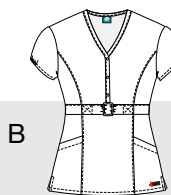
10  
346  
474  
622

**PLANET EARTH • NEW**

100% Cotton



A



B

A. 41318-PER – 2 pocket mock placket princess seam with detail ruffles, fitted back Sizes: XS - 3XL

B. 41322-PER – 2 pocket mock placket buckle front, fitted back Sizes: XS - 3XL



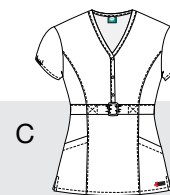
C



01  
652  
972

**HAPPINESS • NEW**

100% Cotton



C



D

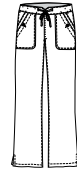
C. 41322-HPY – 2 pocket mock placket buckle front, fitted back Sizes: XS - 3XL

D. 41318-HPY – 2 pocket mock placket princess seam with detail ruffles, fitted back Sizes: XS - 3XL



**41227**

2 pocket raglan elastic, ruffle neck, side tie, fitted back  
Fit: Junior  
Sizes: XS - 3XL



**4247**

6 pocket low rise w/ notch tie front band, straight leg pant, elastic back  
Fit: Junior  
Sizes: XS - 3XL

10	White		
734	Sunset Orange		
972	Sunglow		
474	Twilight • NEW		
652	Razmatazz • NEW		

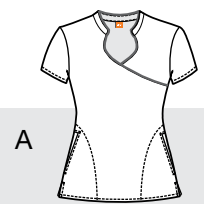
**élan™**  
— by Barco —



- 08
- 30
- 40
- 346

**FORINO • NEW**

80% Polyester / 20% Cotton Eyelet



A

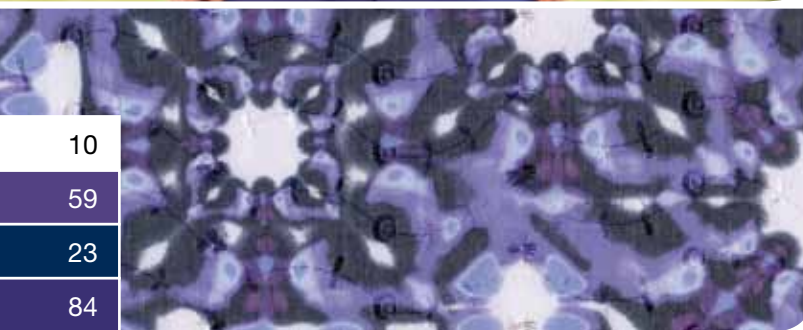


B

A. 41307-FRO – 2 pocket mock wrap mandarin collar, fitted back, contrast trim: 30  
Sizes: XS - 5XL

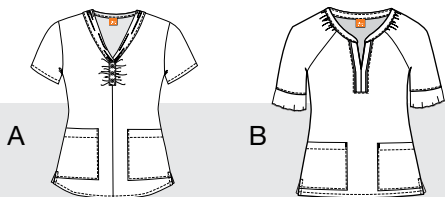
B. 41308-FRO – 2 pocket mock empire front tuck neck, fitted back, contrast trim: 08  
Sizes: XS - XL

A



**PISA • NEW**

80% Polyester / 20% Cotton Eyelet



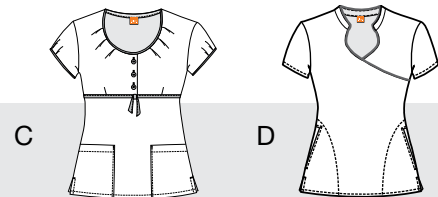
A. 41268-PSA – 2 pocket shirred collar novelty button placket, fitted back Sizes: XS - 5XL  
 B. 71170-PSA – 2 pocket raglan split mandarin neck elbow sleeve, fitted back, contrast trim: 84 Sizes: XS - 5XL

C



**MILAN • NEW**

80% Polyester / 20% Cotton Eyelet



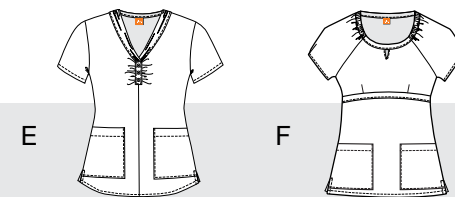
C. 41308-MIL – 2 pocket mock empire front tuck neck, fitted back, contrast trim: 23 Sizes: XS - XL  
 D. 41307-MIL – 2 pocket mock wrap mandarin collar, fitted back, contrast trim: 231 Sizes: XS - 5XL

E



**MONACO • NEW**

80% Polyester / 20% Cotton Eyelet



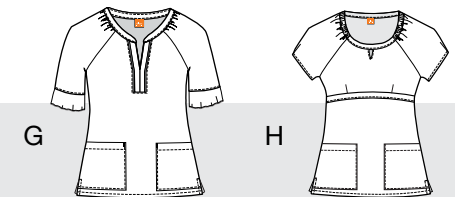
E. 41268-MNO – 2 pocket shirred collar novelty button placket, fitted back Sizes: XS - 5XL  
 F. 41310-MNO – 2 pocket raglan round neck with cut out "v", fitted back Sizes: XS - XL

G



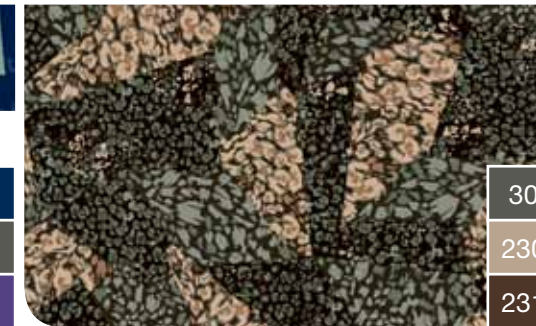
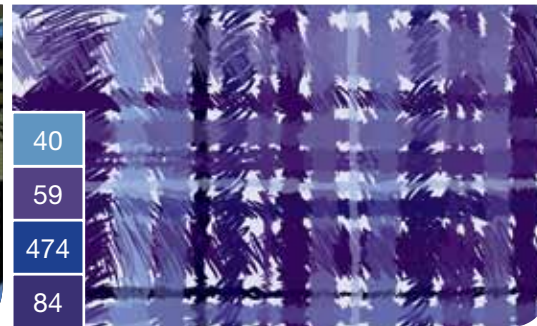
**ROMA • NEW**

80% Polyester / 20% Cotton Eyelet



G. 71170-RMA – 2 pocket raglan split mandarin neck elbow sleeve, fitted back, contrast trim: 23 Sizes: XS - 5XL  
 H. 41310-RMA – 2 pocket raglan round neck with cut out "v", fitted back Sizes: XS - XL





**MONET • NEW**

100% Cotton Sheeting

**WARHOL • NEW**

100% Cotton Sheeting

**DALI • NEW**

100% Cotton Sheeting

**PICASSO • NEW**

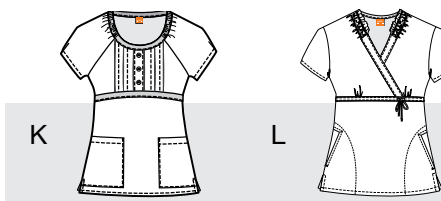
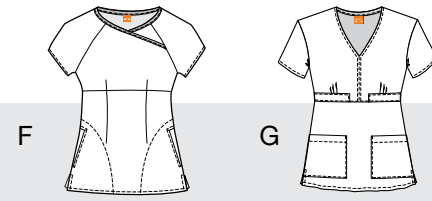
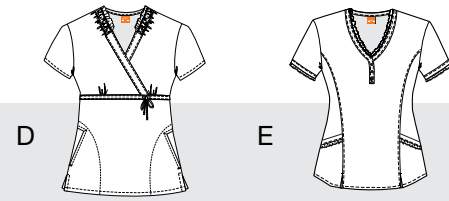
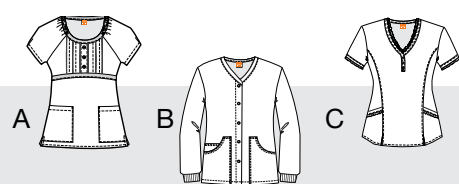
100% Cotton Sheeting

**VAN GOGH • NEW**

100% Cotton Sheeting

**MATISSE • NEW**

100% Cotton Sheeting



A. 41314-MON – 2 pocket raglan round neck mock placket tuck detail front, fitted back, contrast trim: 01 Sizes: XS - XL

B. 6408-MON – 3 pocket round neck button front warm-up, contrast trim: 01 Sizes: XS - 5XL

C. 41294-MON – 2 pocket mock placket princess seam with detail ruffles, fitted back Sizes: XS - 5XL

D. 41304-WOR – 2 pocket elastic ruffle neck, side tie, fitted back Sizes: XS - XL

E. 41294-WOR – 2 pocket mock placket princess seam with detail ruffles, fitted back Sizes: XS - 5XL

F. 41305-DLI – 2 pocket raglan mock wrap neck, fitted back, contrast trim: 529 Sizes: XS - XL

G. 41301-DLI – 2 pocket v-neck midriff seam, tab back Sizes: XS - XL

H. 41300-PIC – 2 pocket mock placket lace up, fitted back, contrast trim: 23 Sizes: XS - XL

I. 6408-PIC – 3 pocket round neck button front warm-up, contrast trim: 23 Sizes: XS - 5XL

J. 41294-PIC – 2 pocket mock placket princess seam with detail ruffles, fitted back Sizes: XS - 5XL

K. 41314-VAN – 2 pocket raglan round neck mock placket tuck detail front, fitted back, contrast trim: 30 Sizes: XS - 5XL

L. 41304-VAN – 2 pocket elastic ruffle neck, side tie, fitted back Sizes: XS - XL

M. 41314-MAT – 2 pocket raglan round neck mock placket tuck detail front, fitted back, contrast trim: 18 Sizes: XS - 5XL

N. 6408-MAT – 3 pocket round neck button front warm-up, contrast trim: 18 Sizes: XS - 5XL

O. 41300-MAT – 2 pocket mock placket lace up, fitted back, contrast trim: 08 Sizes: XS - XL



**41303 • NEW**  
60% Cotton / 40% Polyester  
CVC Peached



2 pocket raglan round neck mock  
placket tuck detail front, fitted back,  
Sizes: XS - 5XL



**41335 • NEW**  
60% Cotton / 40% Polyester  
CVC Peached



2 pocket collar with strapping details, fitted back Sizes: XS - 5XL



**41297 • NEW**  
60% Cotton / 40% Polyester  
CVC Peached



2 pocket fashion mock wrap with tucks, fitted back Sizes: XS - 5XL



**4214 • NEW**  
60% Cotton / 40% Polyester  
CVC Peached



6 pocket straight leg draw front, elastic back pant Sizes: XS - 5XL, XSP -XLP



**7801**  
60% Cotton /  
40% Polyester Peached Twill



2 pocket button front dress with pintucks, adjustable back tabs Sizes: XS - 3XL



**58505**  
65% Polyester /  
35% Cotton Twill



3/4 sleeve double breasted button front dress, back tab belt Sizes: XS - 3XL



**7182**  
65% Polyester /  
35% Cotton Poplin



28.5" 3 pocket vest, back belt Sizes: XS - 2XL



**4414**  
65% Polyester /  
35% Cotton Poplin



28" lab, cuffed short sleeves, back belt Sizes: XS - 2XL



**41266**  
60% Cotton / 40% Polyester  
Peached Twill



2 pocket raglan elastic ruffle neck, fitted back Sizes: XS - 5XL



**41264**  
60% Cotton / 40% Polyester  
Peached Twill



2 pocket mock placket, lace-up, fitted back Sizes: XS - XL



**4305**  
50% Polyester / 50% Cotton



Long sleeve tee Sizes: XS - 2XL



**E5427**  
65% Polyester /  
35% Cotton Twill



28" 2 pocket v-neck lab, pleated sleeves detail, belted back Sizes: 4 - 20



**4412**  
65% Polyester /  
35% Cotton Twill



28" 2 flap pocket lab, 3 button front, princess seams, back button belt Sizes: XS - 2XL



**1841**  
80% Polyester / 20% Cotton  
Drop Needle Knit



29" 2 pocket v-neck button front warm-up Sizes: XS - 5XL



**1112**  
65% Polyester /  
35% Cotton Twill



30" 2 pocket lab, 3 button front, back tab with inverted pleat Sizes: 4 - 20



**7432**

65% Polyester / 35% Cotton Twill



32" 2 pocket lab, hidden pen slot, back belt detail  
Sizes: XS - 2XL

**7403**

65% Polyester / 35% Cotton Twill



32" 3 pocket lab, princess seams, belted back  
Sizes: XS - 2XL

**27146**

65% Polyester / 35% Cotton Twill



35" 2 pocket lab, cell phone pocket, princess seams, double back vent, belted back  
Sizes: XS - 2XL

**29115**

65% Polyester / 35% Cotton Poplin



31" unisex lab, 3 pocket, pen pocket detail, plain back  
Sizes: XS - 5XL (U)

**0619**

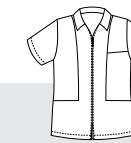
65% Polyester / 35% Cotton Twill



30" 3 mitre pocket lab, classic tailoring, center back vent, 2 button front  
Sizes: 32 - 48: 30" 38 - 48L: 31"

**9339**

65% Polyester / 35% Cotton Twill



30" 3 pocket zip-front shirt, center back vent  
Sizes: 34 - 48



**27172**

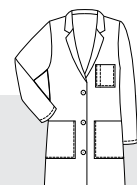
65% Polyester / 35% Cotton Poplin



35" 4 pocket lab, princess seams, 2 button back tab  
Sizes: 4 - 20

**1343**

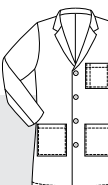
65% Polyester / 35% Cotton Twill



38" 5 pocket lab, Velcro® closure on right pocket, side access, loose 1 button back belt  
Sizes: 4 - 20

**29116**

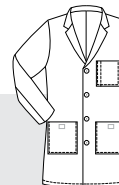
65% Polyester / 35% Cotton Poplin



38" unisex lab, 3 outside pockets, 2 inside pockets, side access, set-in back belt  
Sizes: XS - 5XL (U)

**9103**

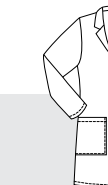
65% Polyester / 35% Cotton Twill



38" 4 pocket lab, Velcro® closure on right pocket, set-in back belt  
Sizes: 32 - 56

**9599**

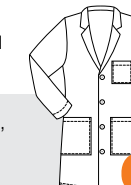
65% Polyester / 35% Cotton Twill



37" 6 pocket lab, loose back belt, side access, inside pockets  
Sizes: 34 - 56: 37" 36L - 56L: 41"

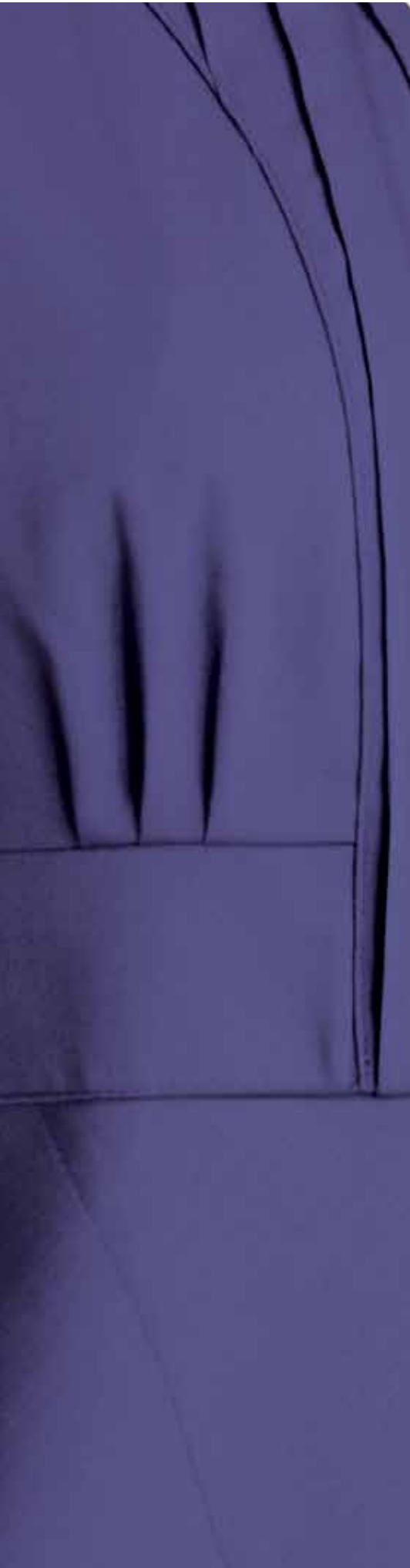
**9422**

65% Polyester / 35% Cotton Twill



40" 3 pocket lab, loose back belt, side access  
Sizes: 34 - 48

Grey's Anatomy™ by Barco



ICU™ by Barco



Crayola™ threads by Barco



ICU™ by Barco



NRG™ by Barco



NRG™ by Barco





NRG - 97% Cotton / 3% Spandex

**MANHATTAN-MNH**

- A. 41293-MNH – 2 pocket elastic ruffle neck, side tie, fitted back contrast thread: 684 Sizes: XS - XL
- B. 41289-MNH – 2 pocket mock henley placket with tab cuff sleeve, fitted back Sizes: XS - XL



NRG - 97% Cotton / 3% Spandex

**BROADWAY-BRW**

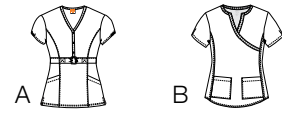
- A. 41287-BRW – 2 pocket mock placket button detail with elastic trim on sleeves, fitted back Sizes: XS - 3XL
- B. 41280-BRW – 2 pocket raglan elastic front neck with tie front, elastic back Sizes: XS - XL



Élan - 80% Polyester / 20% Cotton

**GRENADA-GRD**

- A. 41245-GRD – 2 pocket ruffle square neck, fitted back Sizes: XS - XL
- B. 41244-GRD – 2 pocket raglan elastic, ruffle neck, side tie, fitted back Sizes: XS - 3XL



NRG - 97% Cotton / 3% Spandex

**SOHO-SHO**

- A. 41292-SHO – 2 pocket mock placket buckle front, fitted back Sizes: XS - XL
- B. 41269-SHO – 2 pocket mock wrap side panel, fitted back Sizes: XS - 3XL



Élan - 80% Polyester / 20% Cotton

**MALAYSIA-MLY**

- A. 41245-MLY – 2 pocket ruffle square neck, fitted back Sizes: XS - 5XL
- B. 41281-MLY – 2 pocket mock button empire front tuck neck, fitted back Sizes: XS - XL



Grafx - 100% Cotton

**BIMINI-BIM**

- A. 41261-BIM – 2 pocket princess seam raglan with ruffle neck and sleeve, fitted back Sizes: XS - 3XL
- B. 41258-BIM – 2 pocket mock placket buckle front, fitted back Sizes: XS - XL

**THE BARCO FIT**

Barco knows the importance of flexibility, movement and comfort. That's why we're known for "the Barco Fit," an approach to design and sizing, perfected over time, that ensures that your uniform fits and flatters.

**Missy**

- Fit for comfort and ease
- Adjustable waist details
- Drawstring back detail and side slits for your best fit
- Missy size range: XS - 5XL

**Junior**

- Contour and shape without being tight
- Reduced body width and length
- Sits lower on the waist with a shorter rise
- Junior size range: XS - 5XL

**Men's**

- Your best fit for comfort and ease
- Adjustable waist details
- Re-enforced stitching for extended wear
- Men's size range: S - 5XL

**Unisex**

- Comfort fit
- Easy wear
- Unisex size range: XS - 5XL

Missy						20W	22W-24W	25W-26W	30W-32W	
Size	XS	S	M	L	XL	2XL	3XL	4XL	5XL	
	0-2	4-6	8-10	12-14	16-18	20-22	24-26	28-30	32-34	
Bust	30-32	32-34	35-37	38-40	41-43	45-47	49-51	53-55	57-59	
Waist	22.5-24.5	24.5-26.5	27.5-29.5	30.5-32.5	33.5-35.5	37.5-39.5	41.5-43.5	45.5-47.5	49.5-51.5	
Hip	32.5-34.5	34.5-36.5	37.5-39.5	40.5-42.5	43.5-45.5	47.5-49.5	51.5-53.5	55.5-57.5	59.5-61.5	
Size	2	4	6	8	10	12	14	16	18	20
Bust	33	34	35	36	37	38.5	40	41.5	43	45
Waist	25.5	26.5	27.5	28.5	29.5	31	32.5	34	35.5	37.5
Hip	35.5	36.5	37.5	38.5	39.5	41	42.5	44	45.5	47.5

Junior										
Size	XS	S	M	L	XL	2XL	3XL	4XL	5XL	
	0-2	4-6	8-10	12-14	16-18	20-22	24-26	28-30	32-34	
Bust	28.5-30.5	30.5-32.5	33.5-35.5	36.5-38.5	39.5-41.5	43.5-45.5	47.5-49.5	51.5-53.5	55.5-57.5	
Waist	20.5-22.5	22.5-24.5	25.5-27.5	28.5-30.5	31.5-33.5	35.5-37.5	39.5-41.5	43.5-45.5	47.5-49.5	
Hip	31.5-33.5	33.5-35.5	36.5-38.5	39.5-41.5	42.5-44.5	46.5-48.5	50.5-52.5	54.5-56.5	58.5-60.5	

Men's									
Size	S	M	L	XL	2XL	3XL	4XL	5XL	
Chest	34-36	36-38	40-42	44-46	48-50	52-54	56-58	60-62	
Waist	24-25	28-30	32-34	36-38	40-42	44-46	48-50	52-54	
Size	34	36	38	40	42	44	46	48	50
Chest	33-34	35-36	37-38	39-40	41-42	43-44	45-46	47-48	49-50

Unisex										
Size	XS	S	M	L	XL	2XL	3XL	4XL	5XL	
Bust	30-32	33-35	36-38	40-42	44-46	48-50	52-54	56-58	60-62	
Waist	22-24	25-27	28-30	32-34	36-38	40-42	44-46	48-50	52-54	
Hip	28-30	31-32	34-36	38-40	42-44	46-48	50-52	54-56	58-60	



surgeries funded with ReSurge International



children sponsored for Camp Ronald McDonald for Good Times®



nights at Ronald McDonald House® for the families of children undergoing treatment for serious illnesses



children and their families touched by the generosity of our donors

Barco Uniforms  
Love what you wear™

Passion and commitment. It's what you bring to your work every day. And it's the heart and soul of how we approach the business of making uniforms.

[barcouniforms.com](http://barcouniforms.com)