



Barco  
uniforms

SUMMER 2011



EVERYDAY  
IS ABOUT TO GET BETTER



Love what you wear™

# INTRODUCING ICU BY BARCO™

Day-to-day scrubs elevated to be anything but routine. These “intensive care uniforms” bring together our newest arcTechnology™ fabric and signature fit at a price you can afford. It’s a collection that’s perfect every day, in every way, for everyone.



**arcrelease™**  
TECHNOLOGY

Looking great has never been so effortless. Experience for yourself our premium easy-care fabric with the soil-release finish that helps lift the most challenging stains.

**iew**™

- by Barco -





6433  
7257



**NEW COLORS**

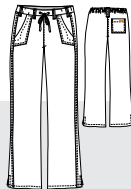
10	WHITE
01	BLACK
08	NEW ROYAL
23	INDIGO
37	HUNTER
40	CIEL
65	WINE

**NEW STYLES • 41232 - 71150 - 7181 - 6433 - 4299 - 7251 - 7257 - 0211**

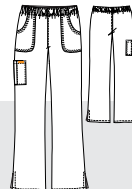
arcRelease™ - 55% Cotton / 45% Poly  
Soft Micro Twill



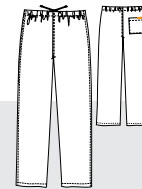
**6433 • MISSY**  
2 pocket princess line snap front jacket, knit cuffs  
Sizes: XS - 5XL  
arcRelease™



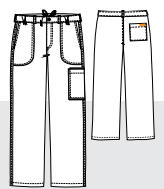
**4299 • JUNIOR**  
3 pocket tie front pant with elastic back waist  
Sizes: XS - 5XL  
XSP - XLP,  
XST - XLT  
arcRelease™



**7251 • MISSY**  
3 pocket soft elastic logo waistband pant  
Sizes: XS - 5XL  
XSP - XLP,  
XST - XLT  
arcRelease™



**7257 • UNISEX**  
1 pocket unisex pant with drawstring tie  
Sizes: XS - 5XL  
arcRelease™



**0211 • MEN**  
5 pocket zip front, draw waist pant  
Sizes: S - 5XL  
ST - XLT  
arcRelease™



A

**JUNIOR**

55% Cotton / 45% Poly  
Soft Micro Twill



B

**MISSY**

55% Cotton / 45% Poly  
Soft Micro Twill



C

**UNISEX**

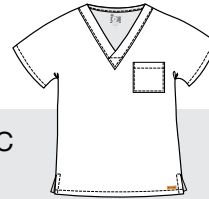
55% Cotton / 45% Poly  
Soft Micro Twill



A



B



C

A. 41232 – 3 pocket mock placket, side panel top Sizes: XS - 5XL  
Shown with 4299

See matrix for available colors.

C. 71150 – 4 pocket detail v-neck, Sizes: XS - 5XL  
Shown with 7251

See matrix for available colors.

E. 7181 – 1 pocket unisex v-neck top, plain back Sizes: XS - 5XL  
Shown with 0211

See matrix for available colors.



**41232 • JUNIOR**  
3 pocket mock placket, side panel top  
Sizes: XS - 5XL  
arcRelease<sup>TM</sup>



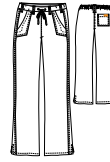
**71150 • MISSY**  
4 pocket detail v-neck  
Sizes: XS - 5XL  
arcRelease<sup>TM</sup>



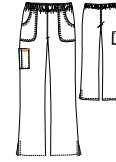
**7181 • UNISEX**  
1 pocket unisex v-neck top, plain back  
Sizes: XS - 5XL  
arcRelease<sup>TM</sup>



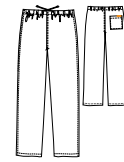
**6433 • MISSY**  
2 pocket princess line snap front jacket, knit cuffs  
Sizes: XS - 5XL  
arcRelease<sup>TM</sup>



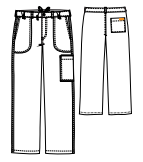
**4299 • JUNIOR**  
3 pocket tie front pant with elastic back waist  
Sizes: XS - 5XL  
XSP - XLP,  
XST - XLT  
arcRelease<sup>TM</sup>



**7251 • MISSY**  
3 pocket soft elastic logo waistband pant  
Sizes: XS - 5XL  
XSP - XLP,  
XST - XLT  
arcRelease<sup>TM</sup>



**7257 • UNISEX**  
1 pocket unisex pant with drawstring tie  
Sizes: XS - 5XL  
arcRelease<sup>TM</sup>



**0211 • MEN**  
5 pocket zip front, draw waist pant  
Sizes: S - 5XL  
ST - XLT  
arcRelease<sup>TM</sup>

10	White							
01	Black							
08	New Royal							
23	Indigo							
37	Hunter							
40	Ciel							
65	Wine							



**29122 • UNISEX**  
arcRelease<sup>TM</sup> - 65% Polyester  
35% Cotton Twill



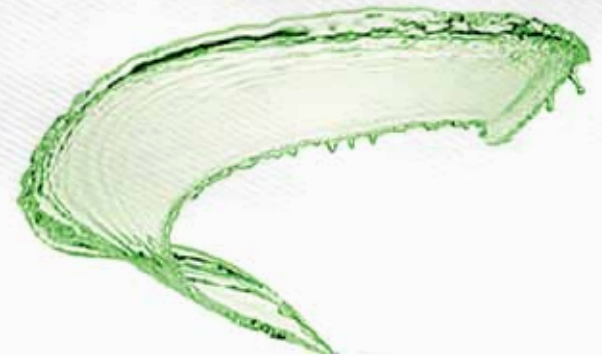
34" 4 pocket unisex Lab Coat,  
inset back band  
Sizes: XS - 5XL

# arcTechnology™

At Barco, we're driven to innovate. It's partly because that's just who we are – always reaching for more and always looking to advance the industry. But it's also because the people who wear our uniforms want comfort and need fabric functionality to match work environments that are becoming more and more demanding every day. The development of arcTechnology™ – Advanced Research Clothing™ Technology – is that next big idea that blends style, fit, feel and performance into a new and higher standard that is distinctly Barco's and uniquely suited to our customers.

## arcrelease™ TECHNOLOGY

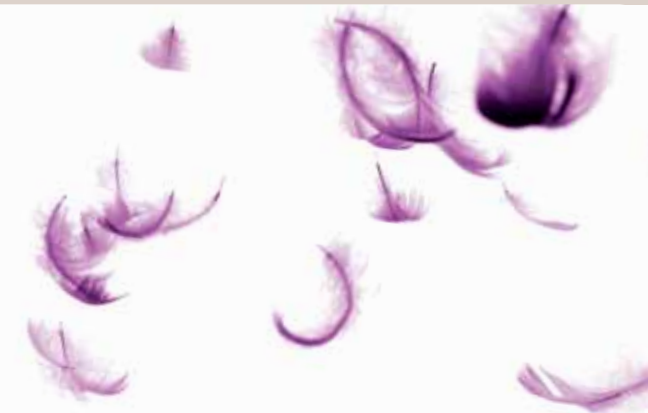
Looking great has never been so effortless. Experience for yourself our premium easy-care fabric with the soil-release finish that helps lift the most challenging stains.



AVAILABLE IN THE ICU™ BY BARCO COLLECTION

## arclux™ TECHNOLOGY

With arcLux™, it's all about touchability. This super-soft fabric pampers you ... even as you spend your day caring for others.



AVAILABLE IN THE GREY'S ANATOMY™ PROFESSIONAL WEAR BY BARCO COLLECTION

## arcflex™ TECHNOLOGY

With arcFlex™, it's all about freedom and fit. This exclusive fabric stretches and moves with you, leaving you looking and feeling your best through even the longest shift.




AVAILABLE IN THE NRG™ BY BARCO COLLECTION



**arclux**<sup>™</sup>  
TECHNOLOGY

It's all about touchability. This super-soft fabric pampers you ... even as you spend your day caring for others.

Watch  
**GREY'S ANATOMY**  
THURSDAYS 9/8c  


# GREY'S ANATOMY™

PROFESSIONAL WEAR BY BARCO  
Grey's Anatomy © ABC Studios. All Rights Reserved.





41241  
7253



41241



41241



41271

NEW COLOR

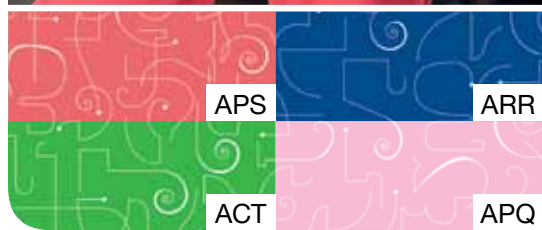
346 CHARTREUSE

## NEW STYLE • 41241

arcLux™ - 77% Polyester / 23% Rayon



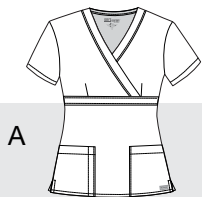
41241 – 2 pocket kimono,  
elastic shirred back  
Sizes: XS - 3XL



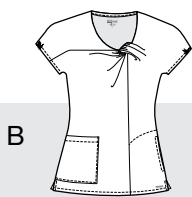
**ATHENA • NEW**

Coordinates with Grey's Anatomy™ Solids arcLux™ - 77% Polyester / 23% Rayon

Each Style has 2 color ways.



A



B

A. 41299 – 3 pocket mock wrap, tab back  
Sizes: XS - 5XL

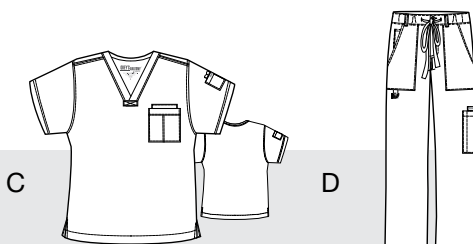
Available in:  
Athena Passion - APS  
Athena Chartreuse - ACT

B. 41271 – 2 pocket knot kimono, elastic shirred back  
Sizes: XS - 3XL

Available in:  
Athena New Royal - ARR  
Athena Pink Quartz - APQ

**MEN**

Coordinates with Grey's Anatomy™ Solids arcLux™ - 77% Polyester / 23% Rayon



C

D

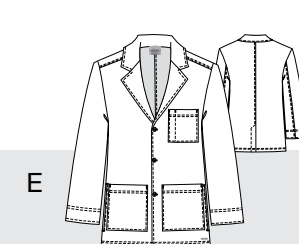
C. 0103 – 3 pocket v-neck, plain back with twill tape accents Sizes: S - 5XL

D. 0203 – 6 pocket zip fly drawstring, with twill tape accents Sizes: S - 5XL, XST - XLT

See matrix for available colors.

**MENS LAB • NEW**

60% Cotton / 40% Polyester  
Peached Twill



E

E. 0905 – 5 pocket men lab coat side access, center back vent  
Sizes: 32 - 48, 50 - 52



**41241 • NEW**

2 pocket knot kimono,  
 elastic shirred back  
 Fit: Junior  
 Sizes: XS - 3XL



**41228**

2 pocket mock placket  
 buckle front,  
 fitted back  
 Fit: Junior  
 Sizes: XS - 3XL



**71139**

2 pocket v-neck,  
 fitted back  
 with stitch detail  
 Fit: Missy  
 Sizes: XS - 5XL



**41101**

2 pocket mock wrap,  
 princess seams,  
 elastic back  
 Fit: Junior  
 Sizes: XS - 5XL



**4153**

3 pocket mock wrap,  
 tab back  
 Fit: Junior  
 Sizes: XS - 5XL

**arclux™**  
 TECHNOLOGY

77% Polyester / 23% Rayon

10	White					
01	Black					
08	New Royal					
23	Indigo					
40	Ciel					
222	Truffle					
328	Bahama					
336	Jade					
474	Twilight					
65	Wine					
905	Steel					
344	Deep Forest					
339	Misty					
458	Turquoise					
533	Mauve					
549	Purple Rain				XS -3XL	
732	Passion					
646	Claret				XS -3XL	
447	Blue Topaz					
622	Pink Quartz					
346	Chartreuse • NEW					



**0905 • NEW**

60% Cotton / 40% Polyester  
 Peached Twill

34" 5 pocket men lab coat,  
 side access, center back vent  
 Sizes: 32 - 48, 50 - 52



**4438**

60% Cotton / 40% Polyester  
 Peached Twill

28.5" 2 pocket princess seam  
 consultation coat, fitted back  
 Sizes: XS - 3XL



**4425**

60% Cotton / 40% Polyester  
 Peached Twill

32" 3 pocket button front, embroidered  
 heartline detail, belt tab back  
 Sizes: XS - 3XL

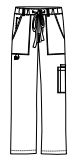




**4430**  
3 pocket round neck  
snap front warm-up,  
fitted back  
Fit: Junior  
Sizes: XS - 5XL



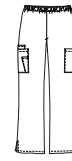
**0103**  
3 pocket v-neck,  
plain back  
with twill tape accents  
Fit: Men's  
Sizes: S - 5XL



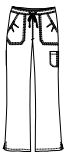
**0203**  
6 pocket  
zip fly drawstring  
with twill tape accents  
Fit: Men's  
Sizes: S - 5XL, XST - XLT



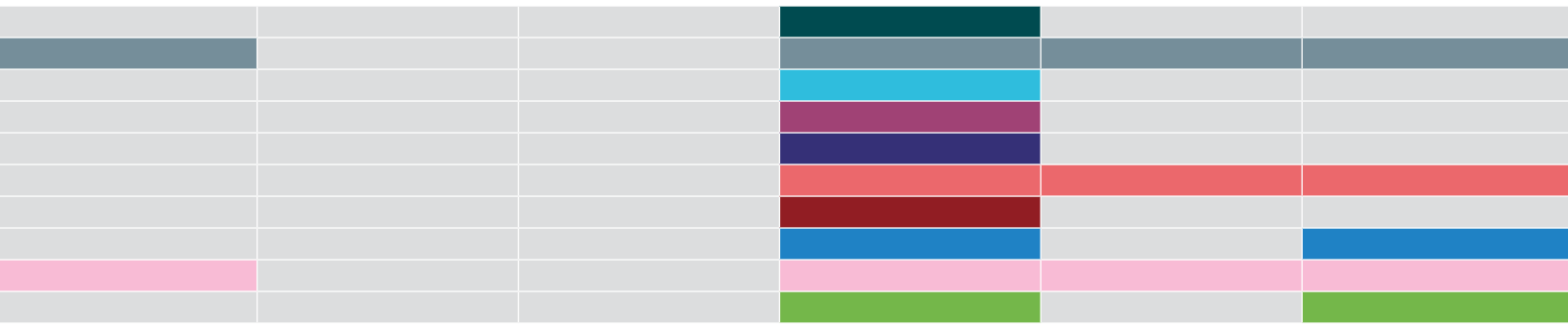
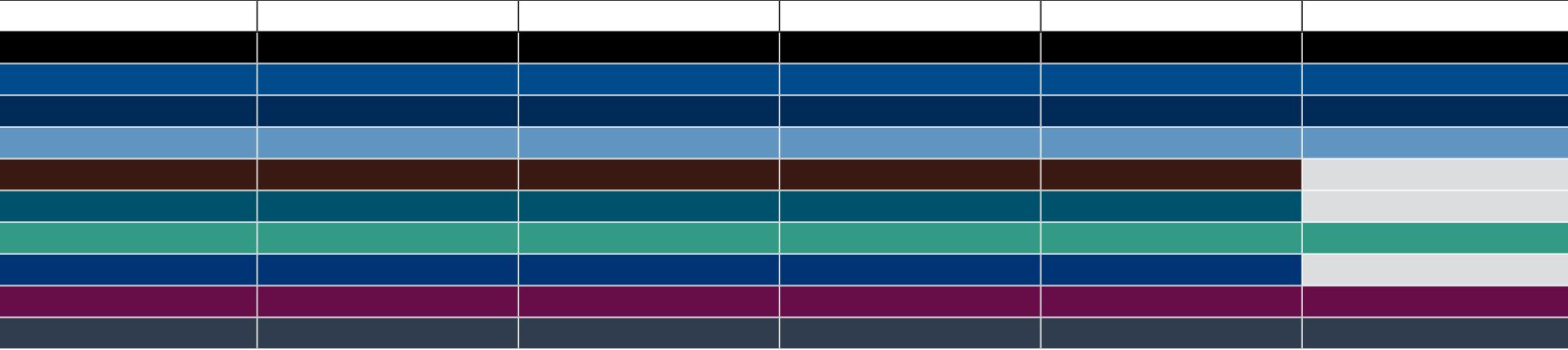
**4232**  
5 pocket, tie front,  
elastic back pant  
Fit: Junior  
Sizes: XS - 5XL,  
XSP - XLP, XST - XLT



**7253**  
4 pocket pull on  
straight leg pant  
Fit: Missy  
Sizes: XS - 5XL,  
XSP - XLP



**4245**  
4 pocket cargo pant  
with logo  
elastic inside back  
Fit: Junior  
Sizes: XS - 3XL,  
XSP - XLP



**4419**  
60% Cotton / 40% Polyester  
Peached Twill

34" 3 pocket lab, waist  
detail Sizes: XS - 3XL



**7446**  
60% Cotton / 40% Polyester  
Peached Twill

32" 2 pocket fitted lab,  
belt back detail Sizes: XS - 3XL



**7460**  
60% Cotton / 40% Polyester  
Peached Twill

32" 3 pocket lab, pintuck detail  
with back tab Sizes: XS - 3XL





**arcflex™**  
TECHNOLOGY

It's all about freedom and fit.  
This exclusive fabric stretches and  
moves with you, leaving you looking  
and feeling your best through even  
the longest shift.

nrg™

— by Barco —





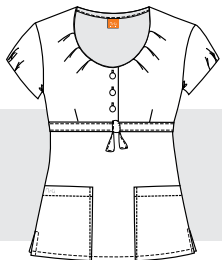
3111  
3208

NEW COLOR

684 HOT TAMALE

NEW STYLES • 3111

arcFlex™ - 74% Poly / 22% Rayon / 4% Spandex



3111 – 2 pocket mock button empire  
front tuck neck, fitted back  
Sizes: XS - 3XL



**MANHATTAN • NEW**

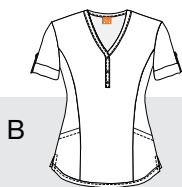
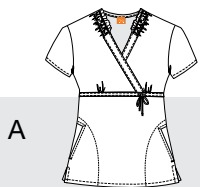
97% Cotton / 3% Spandex Poplin

**SOHO • NEW**

97% Cotton / 3% Spandex Poplin

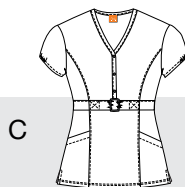
**BROADWAY • NEW**

97% Cotton / 3% Spandex Poplin



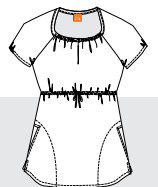
A

B



C

D



E

F

A. 41293-MNH – 2 pocket elastic ruffle neck, side tie, fitted back contrast thread: 684 Sizes: XS - XL

B. 41289-MNH – 2 pocket mock henley placket with tab cuff sleeve, fitted back Sizes: XS - XL

C. 41292-SHO – 2 pocket mock placket buckle front, fitted back Sizes: XS - XL

D. 41269-SHO – 2 pocket mock wrap side panel, fitted back Sizes: XS - 3XL

E. 41287-BRW – 2 pocket mock placket button detail with elastic trim on sleeves, fitted back Sizes: XS - 3XL

F. 41280-BRW – 2 pocket raglan elastic front neck with tie front, elastic back Sizes: XS - XL



**3111 • NEW**

2 pocket mock empire front tuck neck, fitted back  
Fit: Junior  
Sizes: XS - 3XL



**3119**

2 pocket mock wrap panel side, fitted back  
Fit: Junior  
Sizes: XS - 3XL



**3110**

2 pocket multi-needle v-neck, elastic waist tab back  
Fit: Junior  
Sizes: XS - 3XL



**3103**

2 pocket v-neck inset, fitted back  
Fit: Junior  
Sizes: XS - 5XL



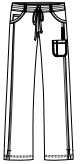
**3414**

3 pocket round neck button front warm-up, fitted back  
Fit: Junior  
Sizes: XS - 5XL



**3208**

6 pocket tie front elastic back, low rise, tapered leg  
Fit: Junior  
Sizes: XS - XL  
XSP - XLP



**3207**

4 pocket tie front straight leg  
Fit: Junior  
Sizes: XS - 5XL  
XSP - XLP  
XST - XLT

10	White						
01	Black						
40	Ciel						
639	Shocking						
645	Plum						
901	Thunder						
23	Indigo						
08	New Royal						
340	Breeze						
528	Violet						
684	Hot Tamale	• NEW					



**3409**

arcFlex™ - 64% Cotton / 34% Poly / 2% Spandex

33" 2 pocket button tab front, fitted back Sizes: XS - 3XL





threads™ by Barco

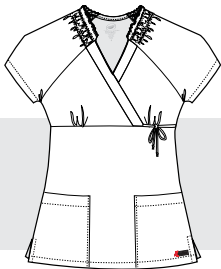




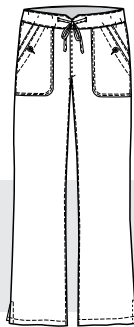
41227  
4247

**41227 - 4247**

60% Cotton / 40% Poly Peached Twill



41227 – 2 pocket raglan elastic ruffle neck, side tie, fitted back  
Sizes: XS - 3XL



4247 – 6 pocket low rise with notch tie front band, straight leg pant, elastic back  
Sizes: XS - 3XL

41227

41227

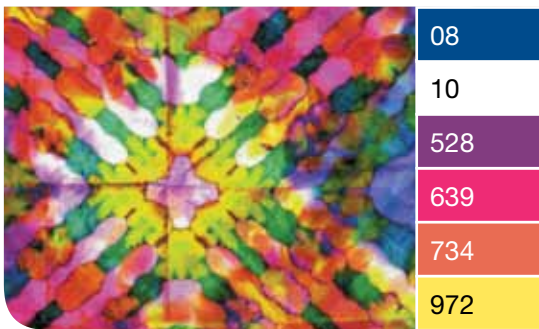
4247



NEW COLORS

734 SUNSET ORANGE

972 SUNGLOW

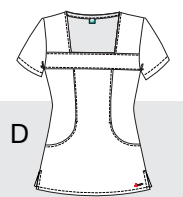
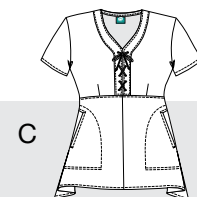
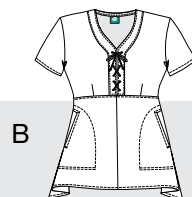
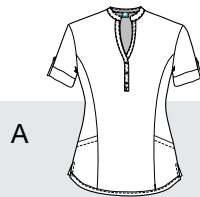


FESTIVAL • NEW

100% Cotton Lawn

KALEIDOSCOPE • NEW

100% Cotton Lawn



A. 41265-FVL – 2 pocket mandarin mock placket with tab cuff sleeve, fitted back Sizes: XS - 3XL

B. 41275-FVL – 2 pocket mock lace-up placket, handkerchief hem, adjustable tab back Sizes: XS - XL

C. 41275-KLC – 2 pocket mock lace-up placket, handkerchief hem, adjustable tab back Sizes: XS - XL

D. 41257-KLC – 2 pocket detail square neck, fitted back Sizes: XS - 3XL



**41227**  
 2 pocket raglan  
 elastic, ruffle neck,  
 side tie, fitted back  
 Fit: Junior  
 Sizes: XS - 3XL



**4247**  
 6 pocket low rise w/  
 notch tie front band,  
 straight leg pant,  
 elastic back  
 Fit: Junior  
 Sizes: XS - 3XL

10	White		
337	Sea Green		
648	Pink Sherbet		
734	Sunset Orange • NEW		
972	Sunglow • NEW		



élan™  
— by Barco —





**MALAYSIA • NEW**

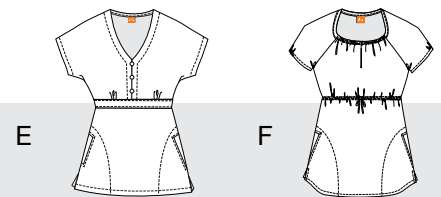
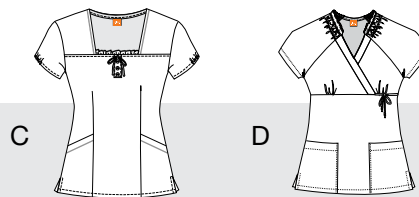
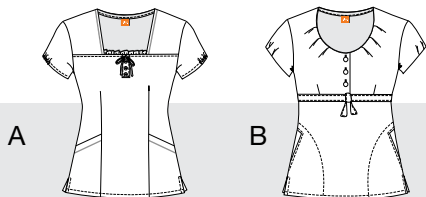
80% Polyester / 20% Cotton Eyelet

**GRENADA • NEW**

80% Polyester / 20% Cotton Eyelet

**ZANZIBAR • NEW**

80% Polyester / 20% Cotton Eyelet



A. 41245-MLY – 2 pocket ruffle square neck, fitted back Sizes: XS - 5XL

B. 41281-MLY – 2 pocket mock button empire front tuck neck, fitted back Sizes: XS - XL

C. 41245-GRD – 2 pocket ruffle square neck, fitted back Sizes: XS - XL

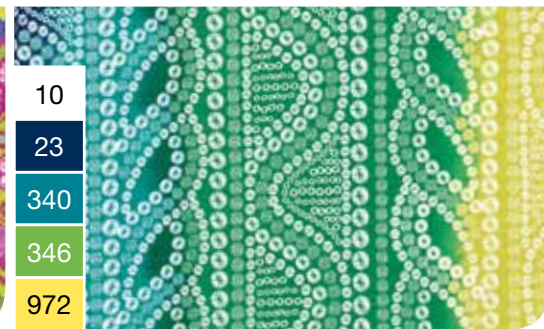
D. 41244-GRD – 2 pocket raglan elastic, ruffle neck, side tie, fitted back Sizes: XS - 3XL

E. 41237-ZBR – 2 pocket engineered kimono v-neck, 3 button detail, fitted back Sizes: XS - XL

F. 41282-ZBR – 2 pocket raglan elastic front neck with tie front, elastic back Sizes: XS - XL

grafx™  
— by Barco —





**BIMINI • NEW**

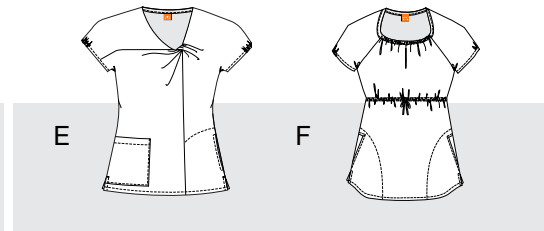
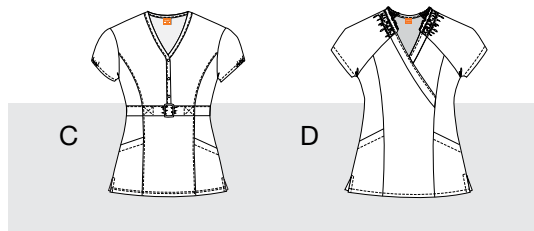
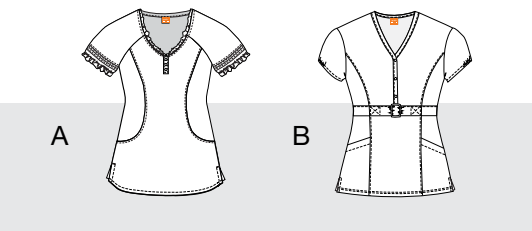
100% Cotton Lawn

**BOHEMIA • NEW**

100% Cotton Lawn

**KEYWEST • NEW**

100% Cotton Lawn



A. 41261-BIM – 2 pocket princess seam raglan with ruffle neck and sleeve, fitted back Sizes: XS - 3XL

B. 41258-BIM – 2 pocket mock placket buckle front, fitted back Sizes: XS - XL

C. 41258-BHI – 2 pocket mock placket buckle front, fitted back Sizes: XS - XL

D. 41206-BHI – 2 pocket raglan elastic, ruffle neck, side tie, fitted back Sizes: XS - 5XL

E. 41276-KYW – 2 pocket knot kimono, elastic Shirred back Sizes: XS - XL

F. 41283-KYW – 2 pocket raglan elastic front neck with tie front, elastic back Sizes: XS - XL

prima™  
— by Barco —



**41266 • NEW**  
60% Cotton / 40% Polyester  
Peached Twill



2 pocket raglan elastic, ruffle neck,  
fitted back Sizes: XS - 5XL



**41264 • NEW**

60% Cotton / 40% Polyester  
Peached Twill



2 pocket mock placket, lace-up, fitted back  
Sizes: XS - XL

**41238**

60% Cotton / 40% Polyester  
Peached Twill



2 pocket mandarin mock placket tab cuff sleeves  
Sizes: XS - 5XL

**41206**

60% Cotton / 40% Polyester  
Peached Twill



2 pocket raglan elastic ruffle neck, fitted back  
Sizes: XS - XL

**41207**

60% Cotton / 40% Polyester  
Peached Twill



2 pocket collared mock wrap, princess seams, fitted back  
Sizes: XS - 3XL



**7802**

60% Cotton / 40% Polyester  
Peached Twill



3 pocket button front dress, knit side panel, fitted back  
Sizes: XS - 3XL

**7801**

60% Cotton / 40% Polyester  
Peached Twill



2 pocket button front dress with pintucks, adjustable back tabs  
Sizes: XS - 3XL

**58505**

65% Polyester / 35% Cotton Twill



3/4 sleeve double breasted button front dress, back tab belt  
Sizes: XS - 3XL



**7182**  
65% Polyester / 35% Cotton Poplin

28.5" 3 pocket vest,  
back belt Sizes: XS - 2XL



**4414**  
65% Polyester / 35% Cotton Poplin

28" lab, cuffed short sleeves,  
back belt Sizes: XS - 2XL



**E5427**  
65% Polyester / 35% Cotton Twill

28" 2 pocket v-neck lab,  
pleated sleeves detail, belted back  
Sizes: 4 - 20



**4412**  
65% Polyester / 35% Cotton Twill

28" 2 flap pocket lab, 3 button front,  
princess seams, back button belt  
Sizes: XS - 2XL



**1841**  
80% Polyester / 20% Cotton  
Drop Needle Knit

29" 2 pocket v-neck button front  
warm-up Sizes: XS - 5XL



**1112**  
65% Polyester / 35% Cotton Twill

30" 2 pocket lab, 3 button front,  
back tab with inverted pleat  
Sizes: 4 - 20





**7432**

65% Polyester / 35% Cotton Twill

32" 2 pocket lab, hidden pen slot, back belt detail  
Sizes: XS - 2XL



**7403**

65% Polyester / 35% Cotton Twill

32" 3 pocket lab, princess seams, belted back Sizes: XS - 2XL



**27146**

65% Polyester / 35% Cotton Twill

35" 2 pocket lab, cell phone pocket, princess seams, double back vent, belted back Sizes: XS - 2XL



**27172**

65% Polyester / 35% Cotton Poplin

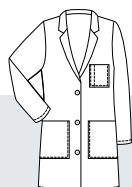
35" 4 pocket lab, princess seams, 2 button back tab Sizes: 4 - 20



**1343**

65% Polyester / 35% Cotton Twill

38" 5 pocket lab, Velcro® closure on right pocket, side access, loose 1 button back belt Sizes: 4 - 20

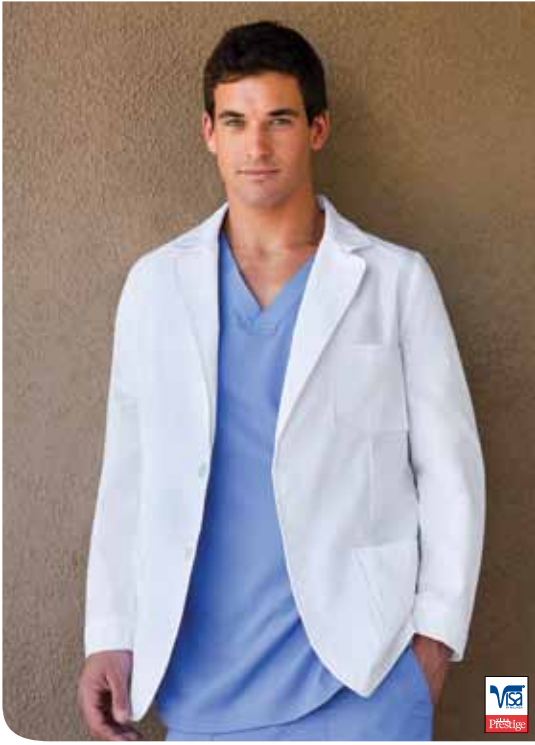


**29116**

65% Polyester / 35% Cotton Poplin

38" unisex lab, 3 outside pockets, 2 inside pockets, side access, set-in back belt Sizes: XS - 5XL (U)





**29115**

65% Polyester / 35% Cotton Poplin



31" unisex lab, 3 pocket, pen pocket detail, plain back  
 Sizes: XS - 5XL (U)

**0619**

65% Polyester / 35% Cotton Twill



30" 3 mitre pocket lab, classic tailoring, center back vent, 2 button front  
 Sizes: 32 - 48: 30" 38 - 48L: 31"

**9339**

65% Polyester / 35% Cotton Twill

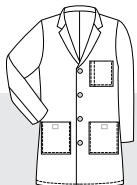


30" 3 pocket zip-front shirt, center back vent  
 Sizes: 34 - 48



**9103**

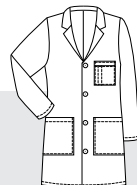
65% Polyester / 35% Cotton Twill



38" 4 pocket lab, Velcro® closure on right pocket, set-in back belt  
 Sizes: 32 - 56

**9599**

65% Polyester / 35% Cotton Twill



37" 6 pocket lab, loose back belt, side access, inside pockets  
 Sizes: 34 - 56: 37" 36L - 56L: 41"

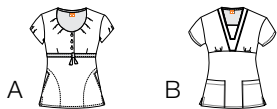
**9422**

65% Polyester / 35% Cotton Twill



40" 3 pocket lab, loose back belt, side access  
 Sizes: 34 - 48

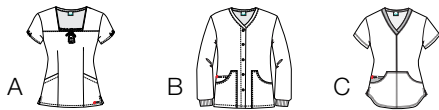
## carry over prints



### ABBY-ABY

NRG - 97% Cotton / 3% Spandex

- A. 41272-ABY – 2 pocket mock button empire front tuck neck, fitted back Sizes: XS - XL
- B. 41236-ABY – 2 pocket v-neck inset, fitted back, contrast trim: 340 Sizes: XS - 3XL



### DANCING HEARTS-DAR

Crayola - 100% Cotton

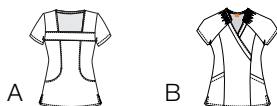
- A. 41243-DAR – 2 pocket ruffle square neck, fitted back Sizes: XS - XL
- B. 7459-DAR – 3 pocket round neck button front warm-up, contrast trim: 648 Sizes: XS - 3XL
- C. 41208-DAR – 3 pocket, kangaroo pocket with contrast cell phone pocket, fitted back, contrast: 337 Sizes: XS - 3XL



### PHOENIX-PHO

Élan - 80% Polyester / 20% Cotton

- A. 41244-PHO – 2 pocket raglan elastic ruffle neck, side tie, fitted back contrast thread: 528 Sizes: XS - XL
- B. 71149-PHO – 2 pocket notch neck, princess seam, fitted back, contrast trim: 905 Sizes: XS - 5XL



### RHIANNA-RHA

GrafX - 100% Cotton

- A. 41216-RHA – 2 pocket detail square neck, fitted back Sizes: XS - XL
- B. 41206-RHA – 2 pocket raglan elastic ruffle neck with side tie, fitted back Sizes: XS - 5XL



### KAYLA-KAL

GrafX - 100% Cotton

- A. 41247-KAL – 2 pocket raglan elastic front neck with tie front, elastic back Sizes: XS - XL
- B. 41270-KAL – 2 pocket mock placket button detail with elastic trim on sleeves, fitted back Sizes: XS - 3XL



### TASHA-TSH

NRG - 97% Cotton / 3% Spandex

- A. 41290-TSH – 2 pocket raglan elastic, ruffle neck, side tie, fitted back Sizes: XS - XL
- B. 41239-TSH – 2 pocket round tucked neck, and sleeves, fitted back Sizes: XS - XL



### SIDNEY-SIE

Élan - 80% Polyester / 20% Cotton

- A. 41211-SIE – 2 pocket baby ruffle top, fitted back, contrast thread: 08 Sizes: XS - XL
- B. 71158-SIE – 2 pocket double binding sweet heart neck, fitted back, contrast trim: 340 Sizes: XS - 5XL



### GRACIE-GRC

Élan - 80% Polyester / 20% Cotton

- A. 41244-GRC – 2 pocket raglan elastic, ruffle neck, side tie, fitted back Sizes: XS - XL
- B. 71158-GRC – 2 pocket double binding sweet heart neck, fitted back, contrast trim: 622 Sizes: XS - 5XL



### SCARLET-SAR

GrafX - 100% Cotton

- A. 41234-SAR – 2 pocket mandarin mock placket with tab cuff sleeve, fitted back Sizes: XS - 3XL
- B. 41224-SAR – 3 pocket, kangaroo pocket with contrast cell phone pocket, fitted back, contrast: 339 Sizes: XS - 3XL
- C. 6404-SAR – 2 pocket round neck warm-up, tie back, contrast cuff: 339 Sizes: XS - 5XL

# THE BARCO FIT

Barco knows the importance of flexibility, movement and comfort. That's why we're known for "the Barco Fit," an approach to design and sizing, perfected over time, that ensures that your uniform fits and flatters.

## Missy

- Fit for comfort and ease
- Adjustable waist details
- Drawstring back detail and side slits for your best fit
- Missy size range: XS - 5XL

## Junior

- Contour and shape without being tight
- Reduced body width and length
- Sits lower on the waist with a shorter rise
- Junior size range: XS - 5XL

## Men's

- Your best fit for comfort and ease
- Adjustable waist details
- Re-enforced stitching for extended wear
- Men's size range: S - 5XL

## Unisex

- Comfort fit
- Easy wear
- Unisex size range: XS - 5XL

Missy						20W	22W-24W	25W-26W	30W-32W	
Size	XS	S	M	L	XL	2XL	3XL	4XL	5XL	
	0-2	4-6	8-10	12-14	16-18	20-22	24-26	28-30	32-34	
Bust	30-32	32-34	35-37	38-40	41-43	45-47	49-51	53-55	57-59	
Waist	22.5-24.5	24.5-26.5	27.5-29.5	30.5-32.5	33.5-35.5	37.5-39.5	41.5-43.5	45.5-47.5	49.5-51.5	
Hip	32.5-34.5	34.5-36.5	37.5-39.5	40.5-42.5	43.5-45.5	47.5-49.5	51.5-53.5	55.5-57.5	59.5-61.5	
Size	2	4	6	8	10	12	14	16	18	20
Bust	33	34	35	36	37	38.5	40	41.5	43	45
Waist	25.5	26.5	27.5	28.5	29.5	31	32.5	34	35.5	37.5
Hip	35.5	36.5	37.5	38.5	39.5	41	42.5	44	45.5	47.5

Junior										
Size	XS	S	M	L	XL	2XL	3XL	4XL	5XL	
	0-2	4-6	8-10	12-14	16-18	20-22	24-26	28-30	32-34	
Bust	28.5-30.5	30.5-32.5	33.5-35.5	36.5-38.5	39.5-41.5	43.5-45.5	47.5-49.5	51.5-53.5	55.5-57.5	
Waist	20.5-22.5	22.5-24.5	25.5-27.5	28.5-30.5	31.5-33.5	35.5-37.5	39.5-41.5	43.5-45.5	47.5-49.5	
Hip	31.5-33.5	33.5-35.5	36.5-38.5	39.5-41.5	42.5-44.5	46.5-48.5	50.5-52.5	54.5-56.5	58.5-60.5	

Men's									
Size	S	M	L	XL	2XL	3XL	4XL	5XL	
Chest	34-36	36-38	40-42	44-46	48-50	52-54	56-58	60-62	
Waist	24-25	28-30	32-34	36-38	40-42	44-46	48-50	52-54	
Size	34	36	38	40	42	44	46	48	50
Chest	33-34	35-36	37-38	39-40	41-42	43-44	45-46	47-48	49-50

Unisex										
Size	XS	S	M	L	XL	2XL	3XL	4XL	5XL	
Bust	30-32	33-35	36-38	40-42	44-46	48-50	52-54	56-58	60-62	
Waist	22-24	25-27	28-30	32-34	36-38	40-42	44-46	48-50	52-54	
Hip	28-30	31-32	34-36	38-40	42-44	46-48	50-52	54-56	58-60	



808

surgeries funded with ReSurge International (formerly Interplast) and the Smile Train



38

children sponsored for Camp Ronald McDonald for Good Times®



80

nights at Ronald McDonald House® for the families of children undergoing treatment for serious illnesses



926

children and their families touched by the generosity of our donors



## SEE THE DIFFERENCE COMPASSION MAKES<sup>sm</sup>

Our numbers are strong and no one succeeds alone. And that is especially true for Barco's Nightingales Foundation. For while our strength is found not only in the medical assistance we provide to children around the world, it's also in the "community of compassion" that's created when retailers, companies, associations and hospitals come together to heal the world around them.

## BECOME A RETAIL PARTNER

Soon we will be launching the Barco's Nightingales Partner Program. If you are interested in learning more about the program, please contact us at [info@barcosnightingales.org](mailto:info@barcosnightingales.org) or call us 310.719.2108.



Barco's  
**Nightingales<sup>sm</sup>**  
Foundation

To learn more, please visit:  
[barcosnightingales.org](http://barcosnightingales.org)



Passion and commitment.  
It's what you bring to your  
work every day. And it's  
the heart and soul of how  
we approach the business  
of making uniforms.



**Barco Uniforms**  
Love what you wear™

[barcouniforms.com](http://barcouniforms.com)