



Barco  
uniforms

SPRING 2012

Love what you wear™



Grey's Anatomy™ by Barco

ICU by Barco™

NRG by Barco™



Elan by Barco™



Grafx by Barco™



Prima by Barco™

## DISCOVER THE POSSIBILITIES

Grey's Anatomy™  
Professional Wear by Barco

ICU by Barco™

NRG by Barco™

Élan by Barco™

Grafx by Barco™

Prima by Barco™

At Barco, there's so much more to a uniform collection than just what meets the eye. The touch of the fabric against your skin. The subtle tailoring that pulls your look together. The quality and durability of an investment made that always lifts you up ... and never lets you down. This is what you've come to expect - uniforms that delight and inspire. And in the process, elevate you and your profession.

## DISCOVER THE LUXURY OF ONE-OF-A-KIND FABRICS

It's the breakthrough product that drapes you in sumptuous comfort every step of your workday. And with a fit that always looks stylishly pulled together. Grey's Anatomy™ Professional Wear by Barco with arclux™ continues to radically redefine what individuals and groups can—and should—expect in the finest and most popular uniform collection available.



41284  
4258

**NEW COLORS**

343 CACTUS

461 BLUEMOON

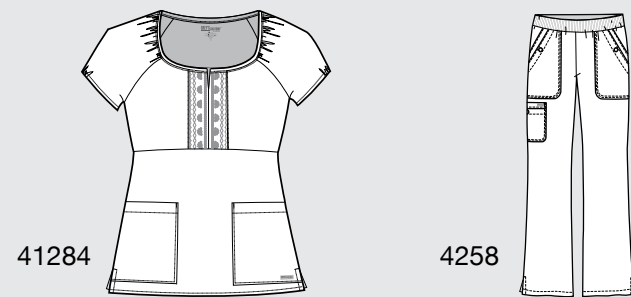
653 NECTAR

**NEW STYLES • 41284 - 4258**

arcLux™ - 77% Polyester / 23% Rayon

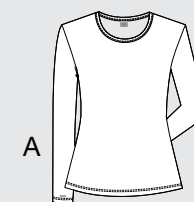
41284 - 2 pocket raglan embroidered top, fitted back Sizes: XS - 5XL

4258 - 6 pocket elastic ribbed waist pant Sizes: XS - 5XL, XSP - XLP



**BURNOUT TEE • NEW**

51% Polyester / 40% Cotton / 9% Linen



A. 4331 - Long sleeve striped burnout tee  
 Sizes: XS - 3XL

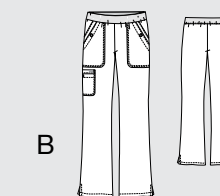
Available in:

**BKH INH CTH BMH NCH**



**PANT • NEW**

arcLux™ - 77% Polyester / 23% Rayon



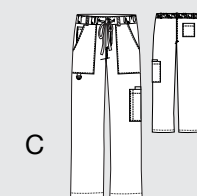
B. 4258 - 6 pocket elastic ribbed waist pant  
 Sizes: XS - 5XL, XSP - XLP

See matrix for available colors.



**MENS PANT**

arcLux™ - 77% Polyester / 23% Rayon



C. 0203 - 6 pocket zip fly drawstring, with twill tape accents  
 Sizes: S - 5XL, ST - XLT

See matrix for available colors.



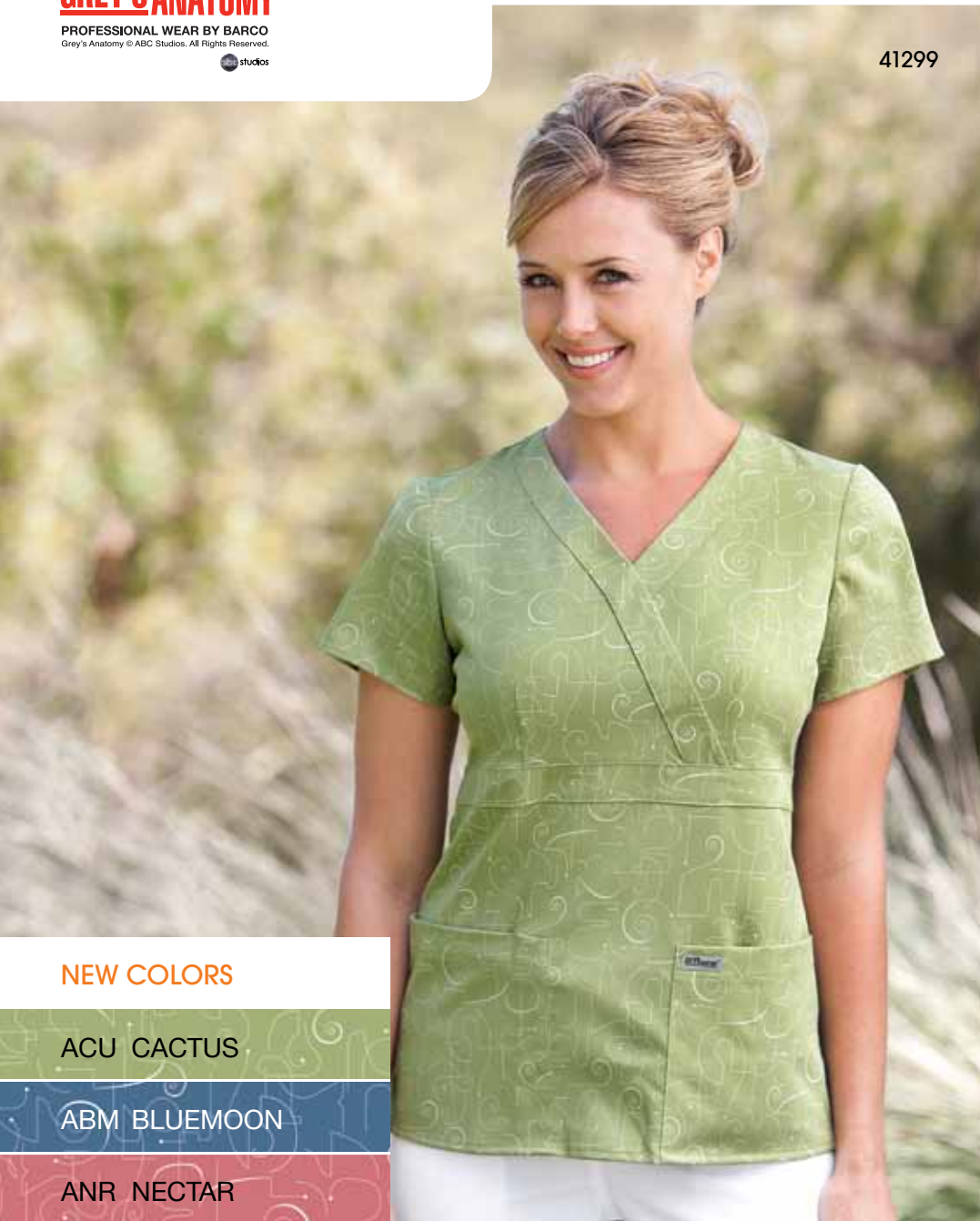
41284



4258



4258



**NEW COLORS**

ACU CACTUS

ABM BLUEMOON

ANR NECTAR

41299 is also available in these colors:

AHB - BLACK

ARR - NEW ROYAL

ATI - INDIGO

AOV - OLIVE

AAT - AMETHYST

ARS - RASPBERRY

**ATHENA**

Coordinates with Grey's Anatomy™ Solids  
 arcLux™ - 77% Polyester / 23% Rayon



41299

41299 - 3 pocket mock wrap, tab back  
 Sizes: XS - 5XL

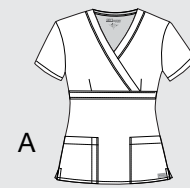
41299



10 222 343 461

**SAKURA • NEW**

100% Cotton



A

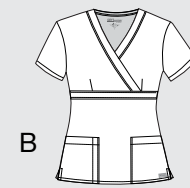
A. 41291-SKR - 3 pocket mock wrap, tab back  
 Sizes: XS - 5XL



10 222 653

**POMPEII • NEW**

100% Cotton



B

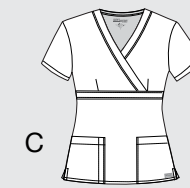
B. 41291-PMI - 3 pocket mock wrap, tab back  
 Sizes: XS - 5XL



10 23 40

**CONFUCIUS • NEW**

100% Cotton



C

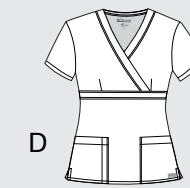
C. 41291-CFI - 3 pocket mock wrap, tab back  
 Sizes: XS - 5XL



10 23 40 529

**FUSION • NEW**

100% Cotton



D

D. 41291-FSN - 3 pocket mock wrap, tab back  
 Sizes: XS - 5XL



4801



**4801 Versatile dress**  
arcLux™ - 77% Polyester / 23% Rayon



40" zip front 3 pocket dress with back french seam yoke  
Sizes: XS - 3XL



**4438**  
60% Cotton / 40% Polyester  
Peached Twill



28" 2 pocket princess seam consultation coat, fitted back  
Sizes: XS - 3XL



**4425**  
60% Cotton / 40% Polyester  
Peached Twill



32" 3 pocket button front, embroidered heartline detail, belt tab back  
Sizes: XS - 3XL



**7446**  
60% Cotton / 40% Polyester  
Peached Twill



32" 2 pocket fitted lab, belt back detail  
Sizes: XS - 3XL



**7460**  
60% Cotton / 40% Polyester  
Peached Twill



32" 3 pocket lab, pintuck detail with back tab  
Sizes: XS - 3XL



**4440**  
60% Cotton / 40% Polyester  
Peached Twill



33" collarless tagless lab with 3 welt pockets and shoulder pads for shape  
Sizes: XS - 3XL



**4419**  
60% Cotton / 40% Polyester  
Peached Twill



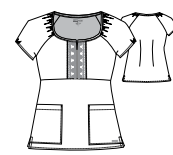
34" 3 pocket lab, waist detail  
Sizes: XS - 3XL



**0905**  
60% Cotton / 40% Polyester  
Peached Twill



34" 5 pocket men lab coat side access, center back vent  
Sizes: 32 - 48, 50 - 52



**41284 • NEW**  
 2 pocket raglan embroidered top, Fitted back  
 Fit: Junior  
 Sizes: XS - 5XL



**41285**  
 2 pocket combination pleat v-neck with bias front skirt, plain back  
 Fit: Junior  
 Sizes: XS - 3XL



**41228**  
 2 pocket mock placket buckle front, fitted back  
 Fit: Junior  
 Sizes: XS - 3XL



**71139**  
 2 pocket v-neck, fitted back with stitch detail  
 Fit: Missy  
 Sizes: XS - 5XL



**41101**  
 2 pocket mock wrap, princess seams, elastic back  
 Fit: Junior  
 Sizes: XS - 5XL



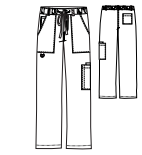
**4153**  
 3 pocket mock wrap, tab back  
 Fit: Junior  
 Sizes: XS - 5XL



**4430**  
 3 pocket round neck snap front warm-up, fitted back  
 Fit: Junior  
 Sizes: XS - 5XL



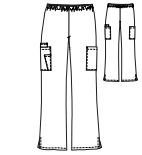
**0103**  
 3 pocket v-neck, plain back with twill tape accents  
 Fit: Men's  
 Sizes: S - 5XL



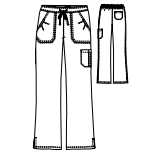
**0203**  
 6 pocket zip fly drawstring with twill tape accents  
 Fit: Men's  
 Sizes: S - 5XL, I: 32½"  
 ST - XLT, I: 34½"



**4232**  
 5 pocket, tie front, elastic back pant  
 Fit: Junior  
 Sizes: XS - 5XL, I: 31½"  
 XSP - XLP, I: 29½"  
 XST - XLT, I: 33½"



**4258 • NEW**  
 6 pocket elastic ribbed waist pant  
 Fit: Junior  
 Sizes: XS - 5XL, I: 31½"  
 XSP - XLP, I: 29½"



**4245**  
 4 pocket cargo pant with logo elastic inside back  
 Fit: Junior  
 Sizes: XS - 3XL, I: 31½"  
 XSP - XLP, I: 29½"  
 XST - XLT, I: 33½"

**arclux™**  
 TECHNOLOGY  
 77% Polyester / 23% Rayon

10	White												
01	Black												
08	New Royal												
23	Indigo												
40	Ciel												
222	Truffle												
328	Bahama												
474	Twilight												
65	Wine												
905	Steel												
39	Teal												
230	Khaki												
343	Cactus • NEW												
461	Bluemoon • NEW												
653	Nectar • NEW												
30	Olive												
59	Amethyst												
529	Raspberry												
458	Turquoise												
549	Purple Rain						XS - 3XL						
732	Passion												
622	Pink Quartz												
346	Chartreuse												

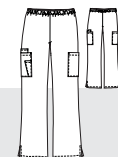
Inseam lengths are based on size medium



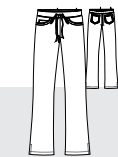
**MENS**  
 See matrix for available styles and colors



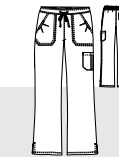
**4258 • NEW**  
 arcLux™ - 77% Poly / 23% Rayon  
 6 pocket elastic ribbed waist pant  
 Sizes: XS - 5XL, XSP - XLP



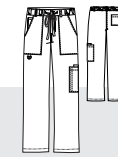
**4232**  
 arcLux™ - 77% Poly / 23% Rayon  
 5 pocket, tie front, elastic back Pant  
 Sizes: XS - 5XL, XSP - XLP, XST - XLT



**4245**  
 arcLux™ - 77% Poly / 23% Rayon  
 4 pocket cargo pant with logo elastic inside back  
 Sizes: XS - 3XL, XSP - XLP, XST - XLT



**0203**  
 arcLux™ - 77% Poly / 23% Rayon  
 6 pocket zip fly drawstring with twill tape accents  
 Sizes: S - 5XL, ST - XLT



## DISCOVER EXTRAORDINARY VALUE EVERY DAY

You provide “intensive care” for your patients. We think your uniform should do the same for you. ICU by Barco™ with arcRelease™ fits your life, your work and your budget. It’s the perfect value-packed choice for individuals and groups that delivers the fit, colors and styles you’ll turn to day after day.



71150  
7251



**NEW COLORS**

222 TRUFFLE

474 TWILIGHT

622 PINK QUARTZ

684 HOT TAMALES

**71150 - 7251**  
arcRelease™ - 55% Cotton / 45% Poly  
Soft Micro Twill

71150 - 4 pocket detail v-neck,  
Sizes: XS - 5XL

7251 - 3 pocket soft elastic logo waistband pant  
Sizes: XS - 5XL, XSP - XLP, XST - XLT

See matrix for available colors.



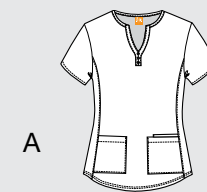
71150

7251



A

**JUNIOR**  
arcRelease™ - 55% Cotton / 45% Poly  
Soft Micro Twill



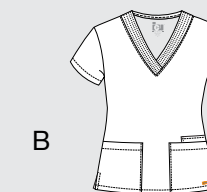
A

A. 41232 - 3 pocket mock placket,  
side panel top Sizes: XS - 5XL  
Shown with 4299  
See matrix for available colors.



B

**MISSY**  
arcRelease™ - 55% Cotton / 45% Poly  
Soft Micro Twill



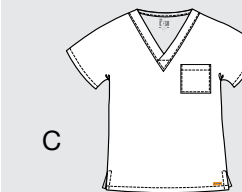
B

B. 71150 - 4 pocket detail v-neck,  
Sizes: XS - 5XL  
Shown with 7251  
See matrix for available colors.



C

**UNISEX**  
arcRelease™ - 55% Cotton / 45% Poly  
Soft Micro Twill



C

C. 7181 - 1 pocket unisex v-neck top,  
plain back Sizes: XS - 5XL  
Shown with 0211  
See matrix for available colors.



41232



71150



4299

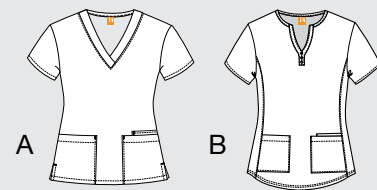
A



10 23 39 474

**MAYA • NEW**

100% Cotton



A. 71163-MYA – 4 pocket detail v-neck, Sizes: XS - 5XL

B. 41311-MYA – 3 pocket mock placket, side panel top Sizes: XS - 5XL

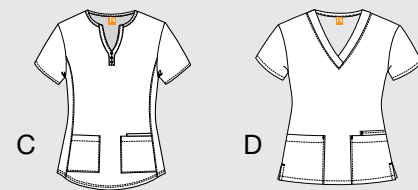
C



10 222 622 653

**LOUISA • NEW**

100% Cotton



C. 41311-LSA – 3 pocket mock placket, side panel top Sizes: XS - 5XL

D. 71163-LSA – 4 pocket detail v-neck, Sizes: XS - 5XL

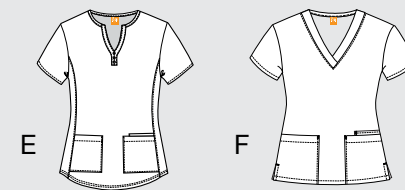
E



10 23 40 230

**WILLA • NEW**

100% Cotton



E. 41311-WLA – 3 pocket mock placket, side panel top Sizes: XS - 5XL

F. 71163-WLA – 4 pocket detail v-neck, Sizes: XS - 5XL

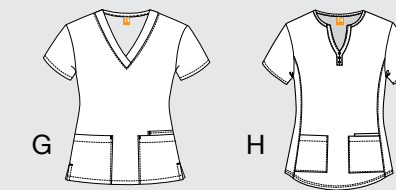
G



01 10 684 905

**EMILY • NEW**

100% Cotton



G. 71163-EMY – 4 pocket detail v-neck, Sizes: XS - 5XL

H. 41311-EMY – 3 pocket mock placket, side panel top Sizes: XS - 5XL

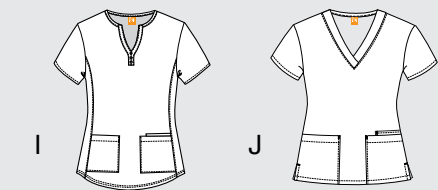
I



10 23 40 84

**ELIZABETH • NEW**

100% Cotton



I. 41311-ELZ – 3 pocket mock placket, side panel top Sizes: XS - 5XL

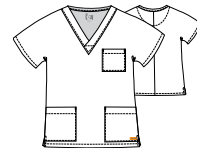
J. 71163-ELZ – 4 pocket detail v-neck, Sizes: XS - 5XL



**41232**  
3 pocket mock placket, side panel top  
Fit: Junior  
Sizes: XS - 5XL



**71150**  
4 pocket detail v-neck  
Fit: Missy  
Sizes: XS - 5XL



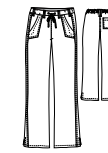
**7178**  
3 pocket unisex v-neck top, plain back  
Fit: Unisex  
Sizes: XS - 5XL



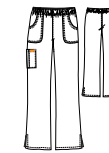
**7181**  
1 pocket unisex v-neck top, plain back  
Fit: Unisex  
Sizes: XS - 5XL



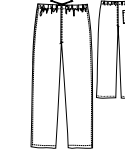
**6433**  
2 pocket princess line snap front jacket, knit cuffs  
Fit: Missy  
Sizes: XS - 5XL



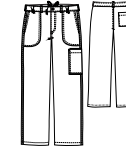
**4299**  
3 pocket tie front pant with elastic back waist  
Fit: Junior  
Sizes: XS - 5XL, I: 31"  
XSP - XLP, I: 29½"  
XST - XLT, I: 33½"



**7251**  
3 pocket soft elastic logo waistband pant  
Fit: Missy  
Sizes: XS - 5XL, I: 31"  
XSP - XLP, I: 29½"  
XST - XLT, I: 33½"



**7257**  
1 pocket unisex pant with drawstring tie  
Fit: Unisex  
Sizes: XS - 5XL, I: 30¼"



**0211**  
5 pocket zip front, draw waist pant  
Fit: Men  
Sizes: S - 5XL, I: 32"  
ST - XLT, I: 34"

10	White								
01	Black								
08	New Royal								
23	Indigo								
37	Hunter								
40	Ciel								
65	Wine								
18	Pewter								
39	Teal								
84	Grape								
230	Khaki								
222	Truffle • NEW								
474	Twilight • NEW								
622	Pink Quartz • NEW								
684	Hot Tamale • NEW								

Inseam lengths are based on size medium



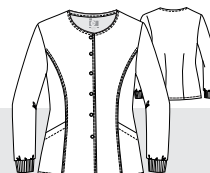
**29122**  
arcRelease™ - 65% Poly  
35% Cotton Twill

34" 7 pocket unisex Lab Coat, with side access, mock back belt  
Sizes: XS - 5XL



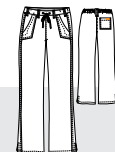
**6433**  
arcRelease™ - 55% Cotton  
45% Poly Soft Micro Twill

2 pocket princess line snap front jacket, knit cuffs  
Sizes: XS - 5XL



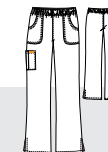
**4299**  
arcRelease™ - 55% Cotton  
45% Poly Soft Micro Twill

3 pocket tie front pant with elastic back  
Sizes: XS - 5XL, XSP - XLP, XST - XLT



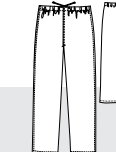
**7251**  
arcRelease™ - 55% Cotton  
45% Poly Soft Micro Twill

3 pocket soft elastic logo waistband pant  
Sizes: XS - 5XL, XSP - XLP, XST - XLT



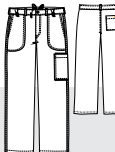
**7257**  
arcRelease™ - 55% Cotton  
45% Poly Soft Micro Twill

1 pocket unisex pant with drawstring tie  
Sizes: XS - 5XL



**0211**  
arcRelease™ - 55% Cotton  
45% Poly Soft Micro Twill

5 pocket zip front, draw waist pant  
Sizes: S - 5XL, ST - XLT



## DISCOVER THE FREEDOM OF PERFORMANCE

Experience the sheer exhilaration of finding a uniform collection that works as hard as you do. NRG by Barco™ with arcFlex™ is right there with you. Moving mountains. Stretching boundaries. And raising the bar on how a professional should look and feel while changing the world, one life at a time.





3108  
3212

**NEW COLORS**

235 MOCHA

469 MARINA

689 JUICY

**NEW STYLES • 3108 - 3212**

arcFlex™ - 74% Poly / 22% Rayon / 4% Spandex

3108 – 2 pocket round neck mock detailed waistline with covered buttons, side panel top, fitted back  
Sizes: XS - 3XL

3212 – 5 pocket mock side tab with covered button, elastic back  
Sizes: XS - 3XL, XSP - XLP



3108

3212



3108



3212



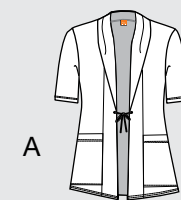
3212



A

**STRETCH KNIT CARDI • NEW**

97% Polyester / 3% Spandex



A

A. 3418 – 2 pocket waterfall collared front "cardi", with tie front, mock band back  
Sizes: XS - 5XL

Available in:

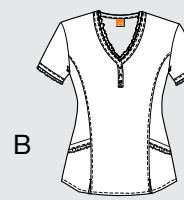
01 10 235



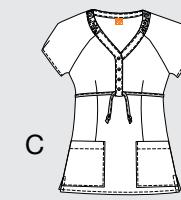
B

**HEATHER DOT • NEW**

55% Cotton / 45% Polyester



B



C

B. 41324 – 2 pocket mock placket princess seam with detail ruffles, fitted back  
Sizes: XS - 5XL  
C. 41315 – 2 pocket raglan with mock placket and loop through tie, fitted back  
Sizes: XS - 3XL

Available in:

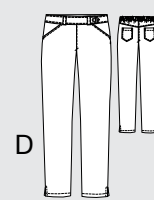
BHD IHD MHD JHD



D

**JUNIOR PANT • NEW**

arcFlex™ - 74% Poly / 22% Rayon / 4% Spandex



D

D. 3212 – 5 pocket mock side tab with covered button, elastic back  
Sizes: XS - 3XL, XSP - XLP

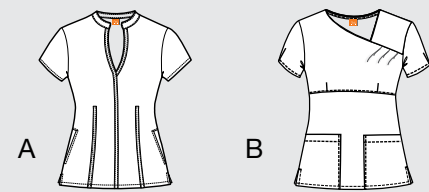
See matrix for available colors.



10 235 469 689

**GROOVY • NEW**

97% Cotton / 3% Spandex Poplin



A. 3120-GRV – 2 pocket mandarin collar, fitted back Sizes: XS - 3XL

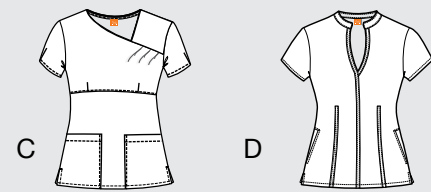
B. 3118-GRV – 2 pocket fashion mock wrap with tucks, fitted back Sizes: XS - XL



231 235 469

**DIG IT • NEW**

97% Cotton / 3% Spandex Poplin



C. 3118-DGT – 2 pocket fashion mock wrap with tucks, fitted back Sizes: XS - XL

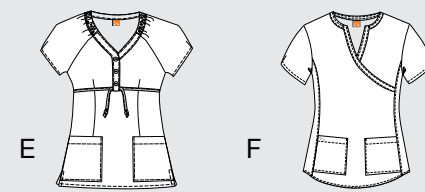
D. 3120-DGT – 2 pocket mandarin collar, fitted back Sizes: XS - 3XL



10 469

**DREAM ON • NEW**

97% Cotton / 3% Spandex Poplin



E. 3121-DON – 2 pocket raglan with mock placket and loop through tie, fitted back Sizes: XS - XL

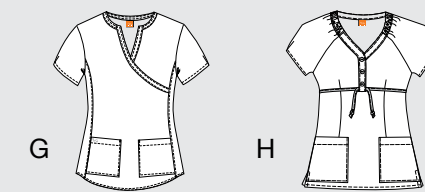
F. 41269-DON – 2 pocket mock wrap panel side, fitted back Sizes: XS - 3XL



10 639 689

**FAR OUT • NEW**

97% Cotton / 3% Spandex Poplin



G. 41269-FOT – 2 pocket mock wrap panel side, fitted back Sizes: XS - 3XL

H. 3121-FOT – 2 pocket raglan with mock placket and loop through tie, fitted back Sizes: XS - XL



**3108 • NEW**  
2 pocket round neck mock  
detailed waistline with  
covered buttons, side  
panel top, fitted back  
Fit: Junior  
Sizes: XS - 3XL



**3113**  
2 pocket shirred  
collar novelty  
button placket,  
fitted back  
Fit: Junior  
Sizes: XS - 3XL



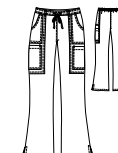
**3119**  
2 pocket mock  
wrap panel side,  
fitted back  
Fit: Junior  
Sizes: XS - 5XL



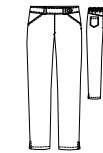
**3103**  
2 pocket v-neck  
inset, fitted back  
Fit: Junior  
Sizes: XS - 5XL



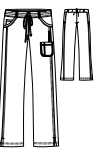
**3414**  
3 pocket round  
neck button  
front warm-up,  
fitted back  
Fit: Junior  
Sizes: XS - 5XL



**3211**  
4 pocket mid rise  
elastic back tie  
front flare pant  
Fit: Junior  
Sizes: XS - 3XL, I: 31½"  
XSP - XLP, I: 29½"



**3212 • NEW**  
5 pocket mock side  
tab with covered button,  
elastic back  
Fit: Junior  
Sizes: XS - 3XL, I: 31½"  
XSP - XLP, I: 29½"



**3207**  
4 pocket tie front  
straight leg  
Fit: Junior  
Sizes: XS - 5XL, I: 32"  
XSP - XLP, I: 30"  
XST - XLT, I: 34"

10	White							
01	Black							
08	New Royal							
23	Indigo							
40	Ciel							
65	Wine							
231	Espresso							
340	Breeze							
476	Azure Blue							
639	Shocking							
684	Hot Tamale							
235	Mocha • NEW							
469	Marina • NEW							
689	Juicy • NEW							



**3415**  
arcFlex™ - 64% Cotton / 34% Poly /  
2% Spandex

30" 2 pocket waist seamed  
double collar with tab detail  
Sizes: XS - 3XL



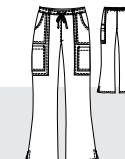
**3409**  
arcFlex™ - 64% Cotton / 34% Poly /  
2% Spandex

33" 2 pocket button tab front,  
fitted back Sizes: XS - 3XL



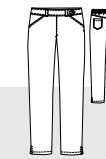
**3211**  
arcFlex™ - 74% Poly /  
22% Rayon / 4% Spandex

4 pocket mid rise, elastic back tie  
front flare pant  
Sizes: XS - 3XL, XSP - XLP



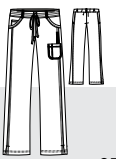
**3212 • NEW**  
arcFlex™ - 74% Poly /  
22% Rayon / 4% Spandex

5 pocket mock side tab with covered  
button, elastic back  
Sizes: XS - 3XL, XSP - XLP,



**3207**  
arcFlex™ - 74% Poly /  
22% Rayon / 4% Spandex

4 pocket tie front straight leg  
Sizes: XS - 5XL, XSP - XLP, XST - XLT





420 participants in the Walk for Kids



\$106K raised for children in need



165 additional life-saving surgeries funded with ReSurge



35 children sponsored for Camp Ronald McDonald for Good Times®



## HOPE MARCHES ON

At Barco's Nightingales Foundation's First Walk for Kids, hundreds of committed supporters came together as a "community of compassion" to give hope to children in need, while honoring the nurses who care for them. It was an inspiring sight and a reflection, we believe, of a movement that continues to gain strength. To give generously to those who ask so little, while paying tribute to those who give so much.



## SEE THE DIFFERENCE COMPASSION MAKES<sup>sm</sup>

We've launched the Barco's Nightingales Partner Program so that you can be part of the momentum. If you are interested in finding out how you can become involved with the Foundation, please contact us at [info@barcosnightingales.org](mailto:info@barcosnightingales.org) or call us at 310.719.2108.

To learn more, please visit:  
[barcosnightingales.org](http://barcosnightingales.org)

élan™  
— by Barco —

## DETAILS MATTER

In your world - and ours - everything counts. From subtle tonal textures to luxurious embroideries, Élan by Barco™ is that special something that expresses your own personal style.

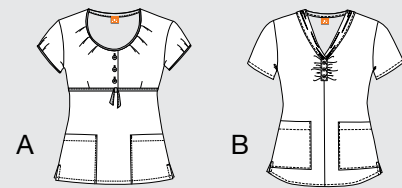




222 230 343

**SAVVY • NEW**

80% Polyester / 20% Cotton Eyelet



A. 41308-SVY – 2 pocket mock empire front tuck neck, fitted back, contrast trim: 343 Sizes: XS - XL

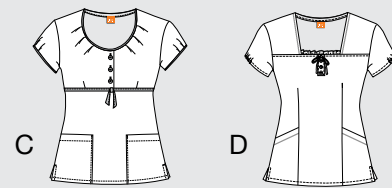
B. 41268-SVY – 2 pocket shirred collar novelty button placket, fitted back Sizes: XS - 5XL



10 230 684 905

**FLIRTY • NEW**

80% Polyester / 20% Cotton Eyelet



C. 41308-FRT – 2 pocket mock empire front tuck neck, fitted back, contrast trim: 684 Sizes: XS - XL

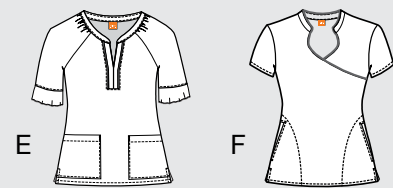
D. 41245-FRT – 2 pocket ruffle square neck, fitted back, contrast trim: 684 Sizes: XS - XL



10 230 461

**TEMPTING • NEW**

80% Polyester / 20% Cotton Eyelet



E. 71170-TMP – 2 pocket raglan split mandarin neck elbow sleeve, fitted back, contrast trim: 461 Sizes: XS - 5XL

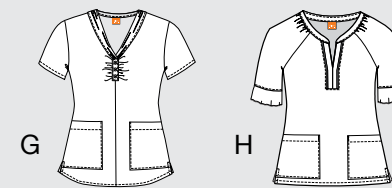
F. 41307-TMP – 2 pocket mock wrap mandarin collar, fitted back, contrast trim: 461 Sizes: XS - 5XL



10 08 40 222 469

**CHARMING • NEW**

80% Polyester / 20% Cotton Eyelet



G. 41268-CHR – 2 pocket shirred collar novelty button placket, fitted back Sizes: XS - 5XL

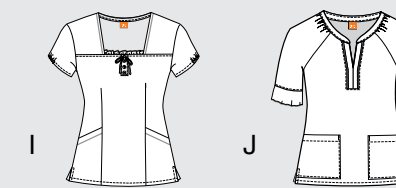
H. 71170-CHR – 2 pocket raglan split mandarin neck elbow sleeve, fitted back, contrast trim: 222 Sizes: XS - 5XL



10 461 689

**POPPY • NEW**

80% Polyester / 20% Cotton Eyelet



I. 41245-PPY – 2 pocket ruffle square neck, fitted back, contrast trim: 461 Sizes: XS - XL

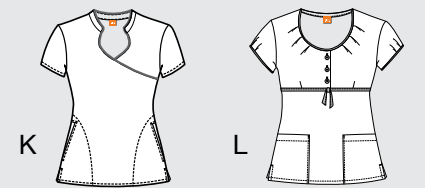
J. 71170-PPY – 2 pocket raglan split mandarin neck elbow sleeve, fitted back, contrast trim: 689 Sizes: XS - 5XL



10 343 461 474

**WITTY • NEW**

80% Polyester / 20% Cotton Eyelet



K. 41307-WIT – 2 pocket mock wrap mandarin collar, fitted back, contrast trim: 474 Sizes: XS - 5XL

L. 41308-WIT – 2 pocket mock empire front tuck neck, fitted back, contrast trim: 461 Sizes: XS - XL



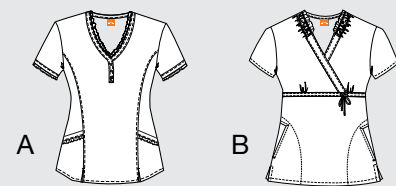
A



10 23 39 328

**BE GREEN • NEW**

100% Cotton



A. 41294-BGR – 2 pocket mock placket princess seam with detail ruffles, contrast edging 39, fitted back Sizes: XS - 5XL

B. 41320-BGR – 2 pocket elastic ruffle neck, side tie, fitted back Sizes: XS - XL

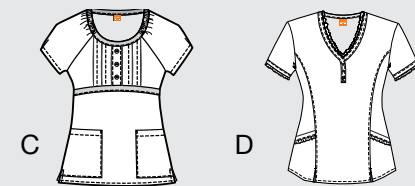
C



10 18 639

**OUI PARIS • NEW**

100% Cotton



C. 41314-OPR – 2 pocket raglan round neck mock placket tuck detail front, fitted back, contrast trim: 01 Sizes: XS - XL

D. 41294-OPR – 2 pocket mock placket princess seam with detail ruffles, contrast edging 639, fitted back Sizes: XS - XL

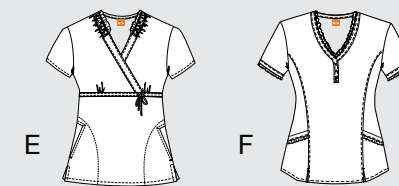
E



10 40 222 474 231

**LOVE PETS • NEW**

100% Cotton



E. 41320-LPT – 2 pocket elastic ruffle neck, side tie, fitted back Sizes: XS - XL

F. 41294-LPT – 2 pocket mock placket princess seam with detail ruffles, contrast edging 474, fitted back Sizes: XS - XL

G



10 222 622 684

**WHO'S SMILING • NEW**

100% Cotton



G. 41294-WSM – 2 pocket mock placket princess seam with detail ruffles, contrast edging 684, fitted back Sizes: XS - 5XL

H. 41314-WSM – 2 pocket raglan round neck mock placket tuck detail front, fitted back, contrast trim: 222 Sizes: XS - XL

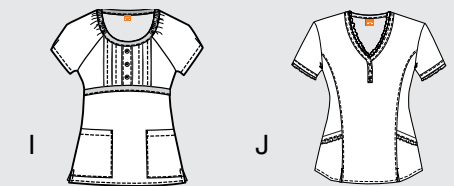
I



08 10 23 39 40

**TWICE A DAY • NEW**

100% Cotton



I. 41314-TWD – 2 pocket raglan round neck mock placket tuck detail front, fitted back, contrast trim: 23 Sizes: XS - XL

J. 41294-TWD – 2 pocket mock placket princess seam with detail ruffles, contrast edging 23, fitted back Sizes: XS - 5XL

prima™  
— by Barco —

## FRESH AND LIGHT

Cool and comfortable. Classic and of the moment. Prima by Barco™ extends the whites you love from a professional wardrobe basic into a fashionable must-have.





**41330 • NEW**  
60% Cotton / 40% Polyester  
Peached



2 pocket banded boat neck kimono with tuck and button detail, fitted back  
Sizes: XS - 5XL



**41325 • NEW**  
60% Cotton / 40% Polyester  
Peached



2 pocket raglan with mock placket and loop through tie, fitted back  
Sizes: XS - 5XL



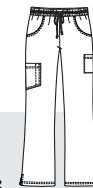
**41327 • NEW**  
60% Cotton / 40% Polyester  
Peached



4 pocket zip front collar top, fitted back  
Sizes: XS - 5XL



**4214**  
60% Cotton / 40% Polyester  
CVC Peached



6 pocket straight leg draw front, elastic back pant  
Sizes: XS - 5XL, I: 31½, XSP -XLP, I: 29½



**4305**  
50% Polyester / 50% Cotton



Long sleeve tee  
Sizes: XS - 2XL



**7801**  
60% Cotton / 40% Polyester  
Peached Twill



2 pocket button front dress with pintucks, adjustable back tabs  
Sizes: XS - 5XL



**41303**  
60% Cotton / 40% Polyester  
Peached



2 pocket raglan round neck mock placket tuck detail front, fitted back  
Sizes: XS - 5XL



**41335**  
60% Cotton / 40% Polyester  
CVC Peached



2 pocket collar with strapping details, fitted back  
Sizes: XS - 5XL



**58505**  
65% Polyester / 35% Cotton  
Twill



3/4 sleeve double breasted button front dress, back tab belt  
Sizes: XS - 5XL



**7182**  
65% Polyester / 35% Cotton  
Poplin



28.5" 3 pocket vest, back belt  
Sizes: XS - 2XL



**4414**  
65% Polyester / 35% Cotton  
Poplin



28" lab, cuffed short sleeves, back belt  
Sizes: XS - 2XL



1841



01 622 23 10

Now available in new colors:

**1841**  
80% Polyester / 20% Cotton  
Drop Needle Knit



29" 2 pocket v-neck  
button front warm-up  
Sizes: XS - 5XL



**E5427**  
65% Polyester /  
35% Cotton Twill



28" 2 pocket v-neck lab,  
pleated sleeves detail,  
belted back Sizes: 4 - 20



**4412**  
65% Polyester /  
35% Cotton Twill



28" 2 flap pocket lab, 3  
button front, princess seams,  
back button belt Sizes: XS - 2XL



**1112**  
65% Polyester /  
35% Cotton Twill



30" 2 pocket lab, 3 button  
front, back tab with inverted  
pleat Sizes: 4 - 20



**7403**  
65% Polyester / 35% Cotton Twill



32" 3 pocket lab, princess seams,  
belted back Sizes: XS - 2XL



**7432**  
65% Polyester / 35% Cotton Twill



32" 2 pocket lab, hidden  
pen slot, back belt detail  
Sizes: XS - 2XL



**27146**  
65% Polyester / 35% Cotton Twill



35" 2 pocket lab, cell phone pocket,  
princess seams, double back vent,  
belted back Sizes: XS - 2XL



**27172**  
65% Polyester / 35% Cotton Poplin



35" 4 pocket lab, princess seams,  
2 button back tab Sizes: 4 - 20



0619



**0619**  
65% Polyester / 35% Cotton Twill



30" 3 mitre pocket lab, classic tailoring, center back vent, 2 button front  
Sizes: 32 - 48: 30" 38 - 48L: 31"



**1343**  
65% Polyester / 35% Cotton Twill



38" 5 pocket lab, Velcro® closure on right pocket, side access, loose 1 button back belt  
Sizes: 4 - 20



**29116**  
65% Polyester / 35% Cotton Poplin



38" unisex lab, 3 outside pockets, 2 inside pockets, side access, set-in back belt  
Sizes: XS - 5XL (U)



**29115**  
65% Polyester / 35% Cotton Poplin



31" unisex lab, 3 pocket, pen pocket detail, plain back  
Sizes: XS - 5XL (U)



**9339**  
65% Polyester / 35% Cotton Twill



30" 3 pocket zip-front shirt, center back vent  
Sizes: 34 - 48



**9103**  
65% Polyester / 35% Cotton Twill



38" 4 pocket lab, Velcro® closure on right pocket, set-in back belt  
Sizes: 32 - 56



**9599**  
65% Polyester / 35% Cotton Twill



37" 6 pocket lab, loose back belt, side access, inside pockets  
Sizes: 34 - 56: 37" 36L - 56L: 41"

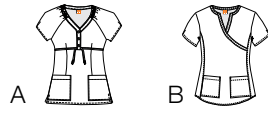


**9422**  
65% Polyester / 35% Cotton Twill



40" 3 pocket lab, loose back belt, side access  
Sizes: 34 - 48

carry over prints



NRG - 97% Cotton / 3% Spandex

**NAPLES-NPL**

- A. 3121-NPL – 2 pocket raglan with mock placket and loop through tie, fitted back Sizes: XS - XL
- B. 41269-NPL – 2 pocket mock wrap panel side, fitted back Sizes: XS - 3XL



Élan - 80% Polyester / 20% Cotton

**MILAN-MIL**

- A. 41308-MIL – 2 pocket mock empire front tuck neck, fitted back, contrast trim: 23 Sizes: XS - XL
- B. 41307-MIL – 2 pocket mock wrap mandarin collar, fitted back, contrast trim: 231 Sizes: XS - 5XL



Élan - 80% Polyester / 20% Cotton

**ROMA-RMA**

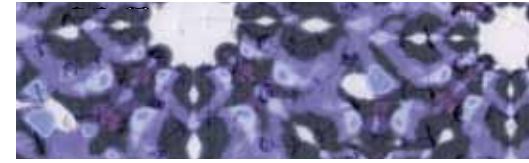
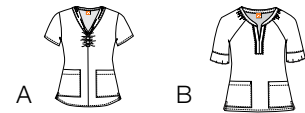
- A. 71170-RMA – 2 pocket raglan split mandarin neck elbow sleeve, fitted back, contrast trim: 23 Sizes: XS - 5XL
- B. 41310-RMA – 2 pocket raglan round neck with cut out “v”, fitted back Sizes: XS - XL



Grafx - 100% Cotton Sheeting

**PICASSO-PIC**

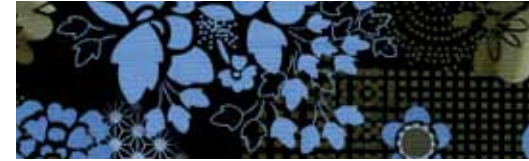
- A. 41300-PIC – 2 pocket mock placket lace up, fitted back, contrast trim: 23 Sizes: XS - XL
- B. 41294-PIC – 2 pocket mock placket princess seam with detail ruffles, fitted back Sizes: XS - 5XL
- C. 6408-PIC – 3 pocket round neck button front warm-up, contrast trim: 23 Sizes: XS - 5XL



Élan - 80% Polyester / 20% Cotton

**PISA-PSA**

- A. 41268-PSA – 2 pocket shirred collar novelty button placket, fitted back Sizes: XS - 5XL
- B. 71170-PSA – 2 pocket raglan split mandarin neck elbow sleeve, fitted back, contrast trim: 84 Sizes: XS - 5XL



Grafx - 100% Cotton Sheeting

**MONET-MON**

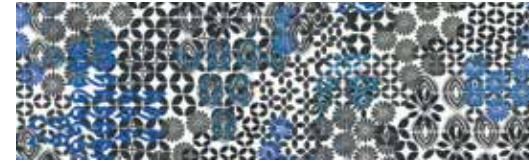
- A. 41314-MON – 2 pocket raglan round neck mock placket tuck detail front, fitted back, contrast trim: 01 Sizes: XS - XL
- B. 41294-MON – 2 pocket mock placket princess seam with detail ruffles, fitted back Sizes: XS - 5XL
- C. 6408-MON – 3 pocket round neck button front warm-up, contrast trim: 01 Sizes: XS - 5XL



Grafx - 100% Cotton Sheeting

**VAN GOGH**

- A. 41314-VAN – 2 pocket raglan round neck mock placket tuck detail front, fitted back, contrast trim: 30 Sizes: XS - 5XL
- B. 41304-VAN – 2 pocket elastic ruffle neck, side tie, fitted back Sizes: XS - XL



Grafx - 100% Cotton Sheeting

**MATISSE-MAT**

- A. 41314-MAT – 2 pocket raglan round neck mock placket tuck detail front, fitted back, contrast trim: 18 Sizes: XS - 5XL
- B. 41300-MAT – 2 pocket mock placket lace up, fitted back, contrast trim: 08 Sizes: XS - XL
- C. 6408-MAT – 3 pocket round neck button front warm-up, contrast trim: 18 Sizes: XS - 5XL



# The Barco Difference

The Barco Fit

arcTechnology™

Custom Embroidery

Pants Matrix

Discover for yourself everything Barco has to offer beyond great design. Scrubs that fit just right. Fabrics that always perform. Custom services that make every uniform uniquely yours. And tools that help you stock your store with the perfect combination of products.

# The Barco Fit

Barco knows the importance of flexibility, movement and comfort. That's why we're known for "the Barco Fit," an approach to design and sizing, perfected over time, that ensures that your uniform fits and flatters.

## Missy

- Fit for comfort and ease
- Adjustable waist details
- Drawstring back detail and side slits for your best fit
- Missy size range: XS - 5XL

## Junior

- Contour and shape without being tight
- Reduced body width and length
- Sits lower on the waist with a shorter rise
- Junior size range: XS - 5XL

## Men's

- Your best fit for comfort and ease
- Adjustable waist details
- Re-enforced stitching for extended wear
- Men's size range: S - 5XL

## Unisex

- Comfort fit
- Easy wear
- Unisex size range: XS - 5XL

Missy						20W	22W-24W	25W-26W	30W-32W	
Size	XS	S	M	L	XL	2XL	3XL	4XL	5XL	
	0-2	4-6	8-10	12-14	16-18	20-22	24-26	28-30	32-34	
Bust	30-32	32-34	35-37	38-40	41-43	45-47	49-51	53-55	57-59	
Waist	22.5-24.5	24.5-26.5	27.5-29.5	30.5-32.5	33.5-35.5	37.5-39.5	41.5-43.5	45.5-47.5	49.5-51.5	
Hip	32.5-34.5	34.5-36.5	37.5-39.5	40.5-42.5	43.5-45.5	47.5-49.5	51.5-53.5	55.5-57.5	59.5-61.5	
Size	2	4	6	8	10	12	14	16	18	20
Bust	33	34	35	36	37	38.5	40	41.5	43	45
Waist	25.5	26.5	27.5	28.5	29.5	31	32.5	34	35.5	37.5
Hip	35.5	36.5	37.5	38.5	39.5	41	42.5	44	45.5	47.5

Junior									
Size	XS	S	M	L	XL	2XL	3XL	4XL	5XL
	0-2	4-6	8-10	12-14	16-18	20-22	24-26	28-30	32-34
Bust	28.5-30.5	30.5-32.5	33.5-35.5	36.5-38.5	39.5-41.5	43.5-45.5	47.5-49.5	51.5-53.5	55.5-57.5
Waist	20.5-22.5	22.5-24.5	25.5-27.5	28.5-30.5	31.5-33.5	35.5-37.5	39.5-41.5	43.5-45.5	47.5-49.5
Hip	31.5-33.5	33.5-35.5	36.5-38.5	39.5-41.5	42.5-44.5	46.5-48.5	50.5-52.5	54.5-56.5	58.5-60.5

Men's									
Size	S	M	L	XL	2XL	3XL	4XL	5XL	
Chest	34-36	36-38	40-42	44-46	48-50	52-54	56-58	60-62	
Waist	24-25	28-30	32-34	36-38	40-42	44-46	48-50	52-54	
Size	34	36	38	40	42	44	46	48	50
Chest	33-34	35-36	37-38	39-40	41-42	43-44	45-46	47-48	49-50

Unisex									
Size	XS	S	M	L	XL	2XL	3XL	4XL	5XL
Bust	30-32	33-35	36-38	40-42	44-46	48-50	52-54	56-58	60-62
Waist	22-24	25-27	28-30	32-34	36-38	40-42	44-46	48-50	52-54
Hip	28-30	31-32	34-36	38-40	42-44	46-48	50-52	54-56	58-60

# Custom Embroidery

Brand and personalize your uniforms and make them uniquely yours. Barco's customization services give your professional wear that special touch and flawless finish that will make it memorable in every way.

Whether you choose to add an individual name, title or the name of your facility, our personalization services will do it with precision and style.



Passion and commitment.

It's what you bring to your work every day. And it's the heart and soul of how we approach the business of making uniforms.

**Barco Uniforms**  
**Love what you wear™**